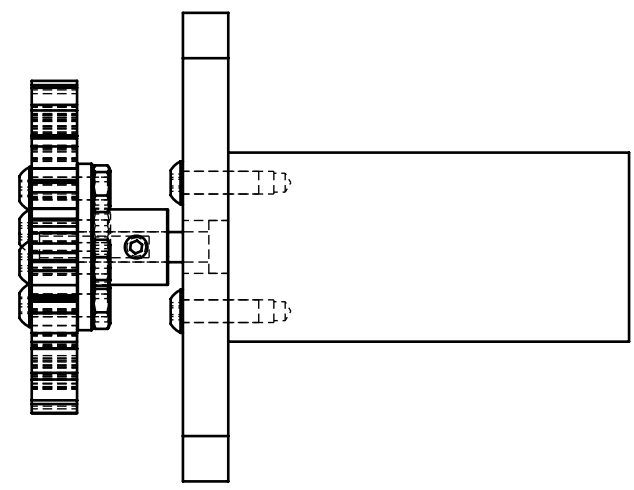
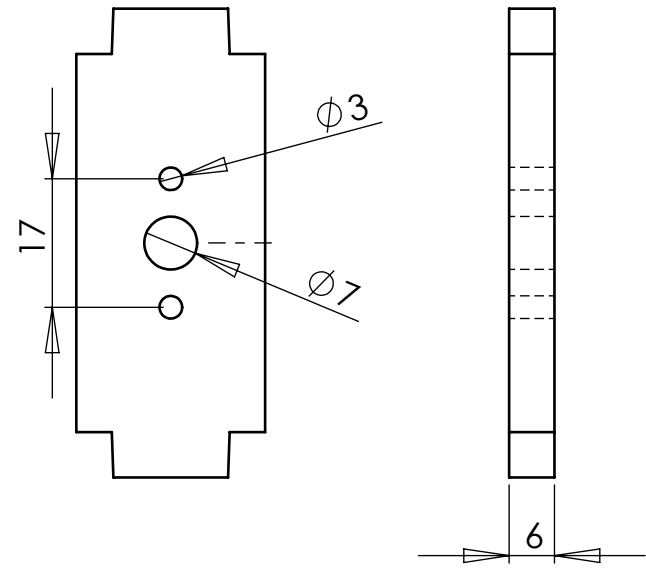
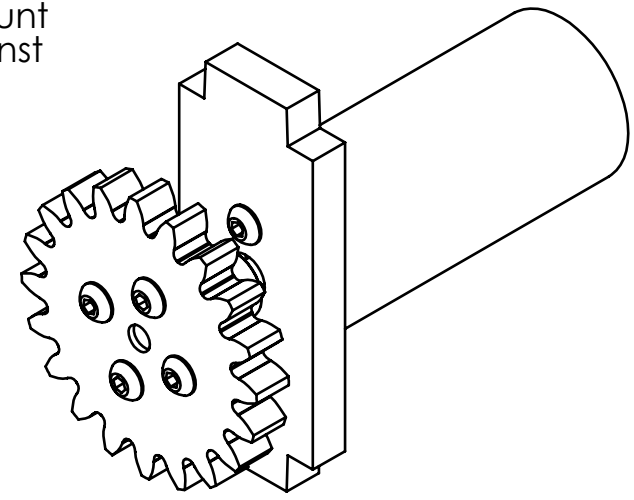


The 25 mm gearmotor is designed to mount using M3 screws clamping the face against a flat surface as shown. This is the only acceptable way to mount this motor.



The 7 mm hole provides clearance for the shaft bushing, and the 3 mm holes are for mounting screws. With a 6 mm panel, use M3 x 10 screws.

Laser-cut plywood parts cut as drawn. With kerf all outside dimensions will be about 0.2 mm smaller, all inside dimensions will be about 0.2 mm larger.

25 mm Gearmotor Mount		
Garth Zeglin, garthz@cmu.edu		
Material: 6 mm plywood		
Units: millimeters		
Scale: 1:1	Date: 5/14/2026	Sheet 1 of 1