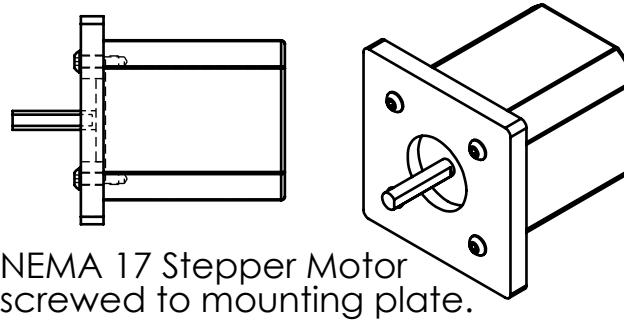
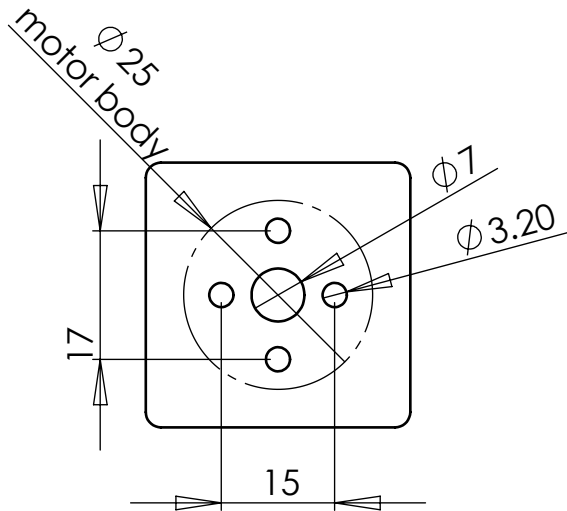


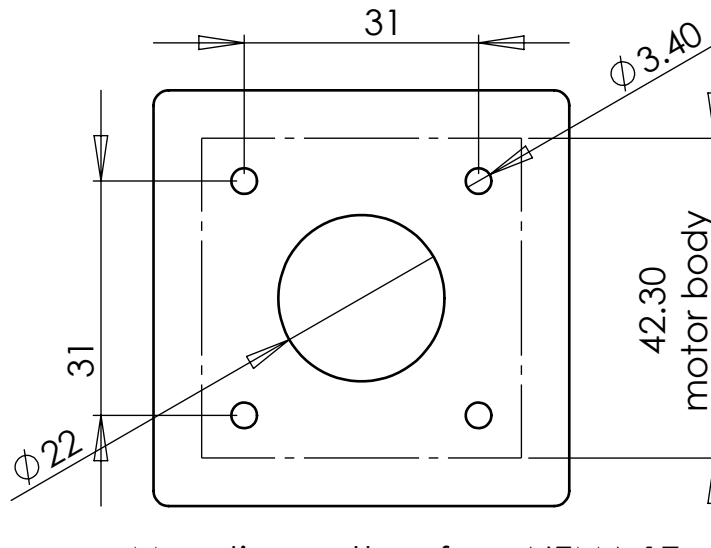
All of our motors are designed to mount using screws clamping the motor mounting face against a flat surface. This is the only acceptable way to mount these motor, please do not clamp the body, use glue, or any other ad hoc attachment.



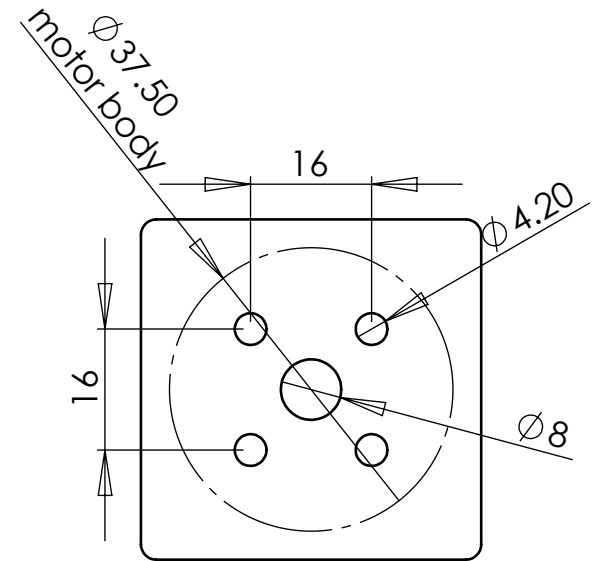
NEMA 17 Stepper Motor screwed to mounting plate.



Mounting pattern for a 25 mm gearmotor. The 7 mm hole provides clearance for the shaft bushing, and the 3.2 mm holes are for mounting screws. With a 6 mm panel, use M3 x 10 screws. Most of our motors use two M3 at 17 mm spacing, but some use two at 15 mm spacing, so both are drawn.



Mounting pattern for a NEMA 17 stepper motor. With a 6 mm panel, use M3 x 10 screws.



Mounting pattern for a goBILDA 5202 gearmotor. With a 6 mm panel, use M4 x 10 screws.

Laser-cut plywood parts cut as drawn. With kerf all outside dimensions will be about 0.2 mm smaller, all inside dimensions will be about 0.2 mm larger.

Motor Mounting Demo	
Garth Zeglin, garthz@cmu.edu	
Material: 6 mm plywood	
Units: millimeters	
Scale: 1:1	Date: 5/14/2026
Sheet 1 of 1	