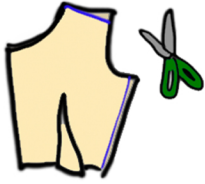


Vest Construction Cheat Sheet



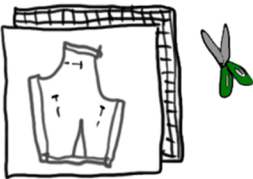
STEP 1: On your fitted muslin unstitch sewn parts, cut along new drawn-on sewing lines, cut along old sewing lines that are still useful. Do this for both the front and back panels.



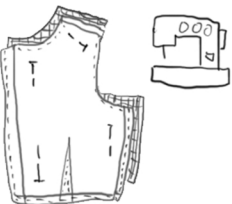
STEP 2: Trace flattened muslin onto brown paper. Mark and draw in darts. Cut out new paper pattern. Do this for both the front and back panels.



STEP 3: Trace paper pattern onto canvas. Mark and draw on darts. Add seam allowance. For front panel only, seam allowance should be: 1" at center front. For both front and back panels seam allowance should be: 1/2" at shoulder, 1/2" at side seam, and 1/2" at waist. Do not add any seam allowance at neck and arm hole. Do this for both the front and back panels.



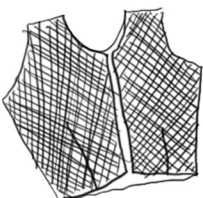
STEP 4: Front panels layer together: 2 layers of netting and 2 layers of canvas (including the one you just marked). Pin together and cut out along cut lines. Back panel layer together: 1 layer of netting and the 1 layer of canvas you just marked. Pin together and cut out.



STEP 5: Pin together 1 layer of canvas and 1 layer of netting for each panel. Sew along all edges at 1/4" from edges. Sew 1/8" inside dart marks. Sew darts together. Do this for all three panels.



STEP 6: Pin and sew the front and back panels together at the shoulder and side seams (at sewing line).



FINISHED VEST: Reverse and try on!
(It is intended to close at center front lines on the front panels.)