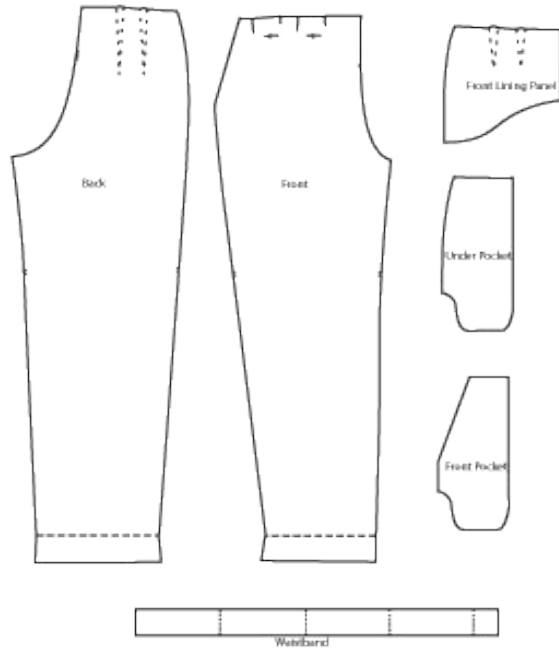


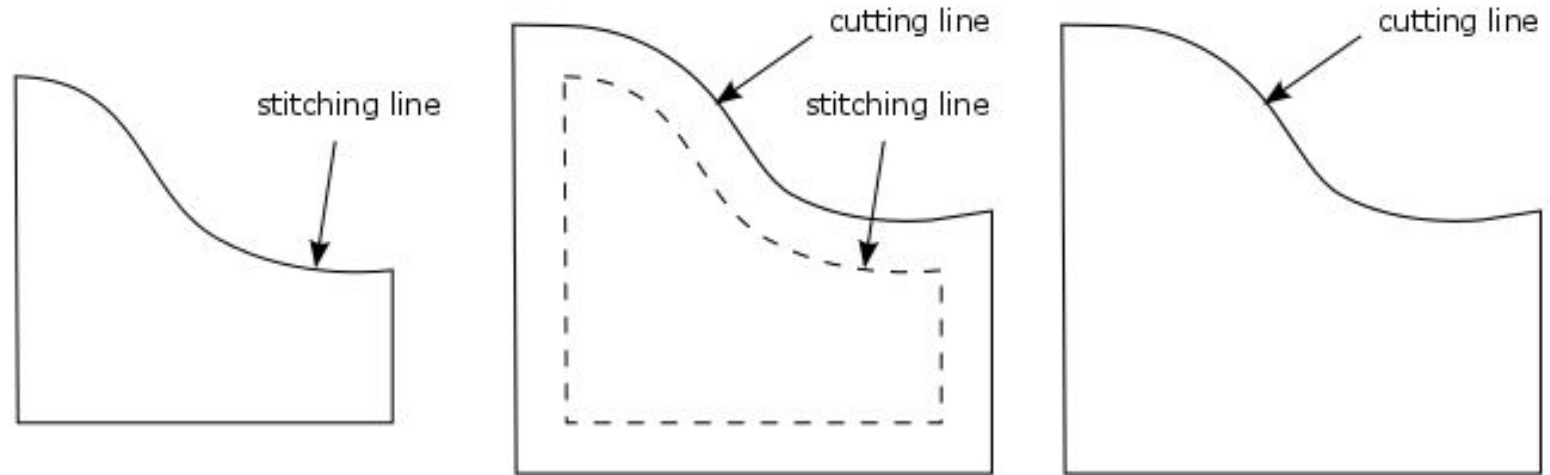


Forming Shapes

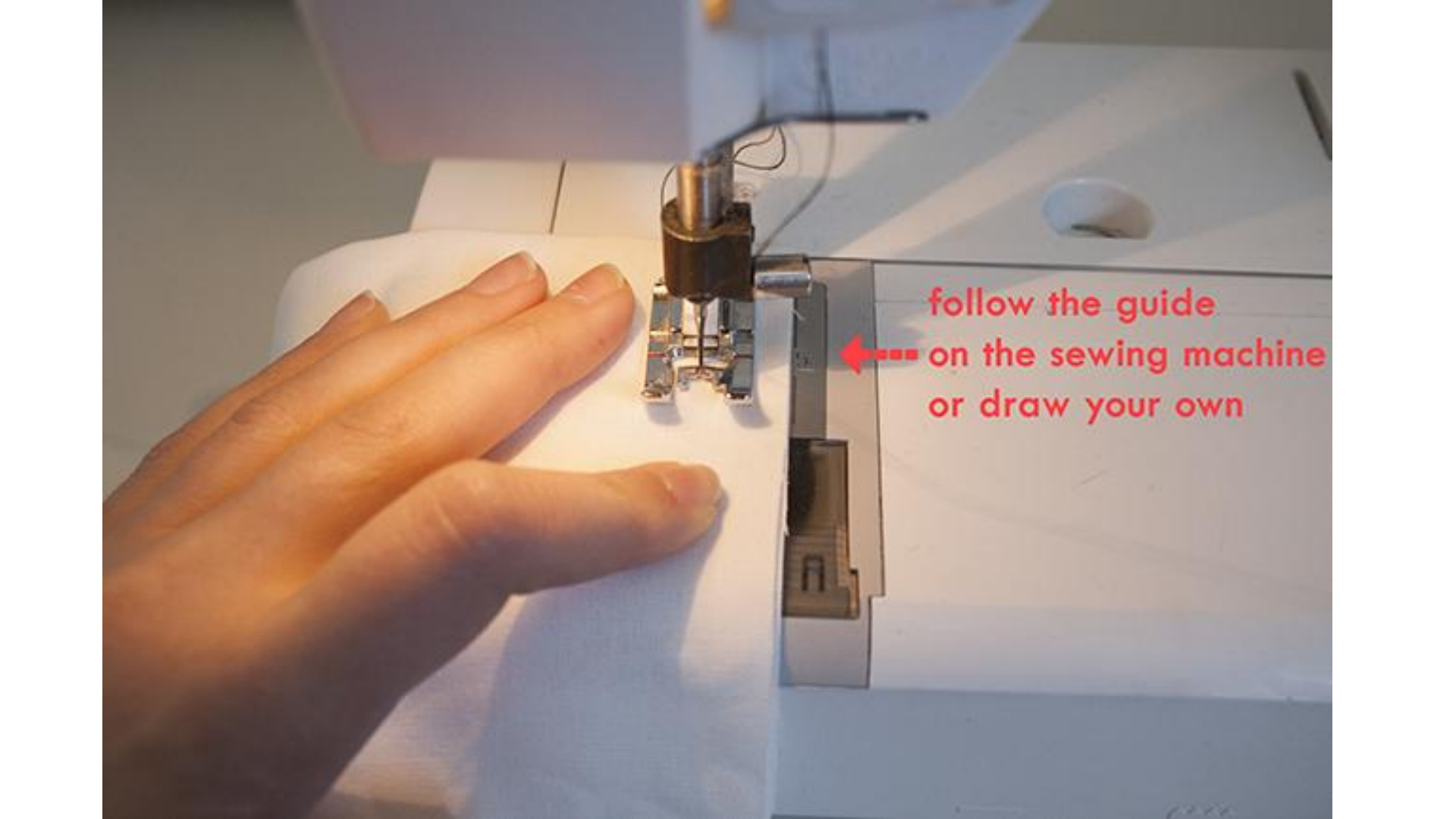
Patterns - template created for different parts of an object



Seam Allowances (inlay): area between edge of fabric and stitching line

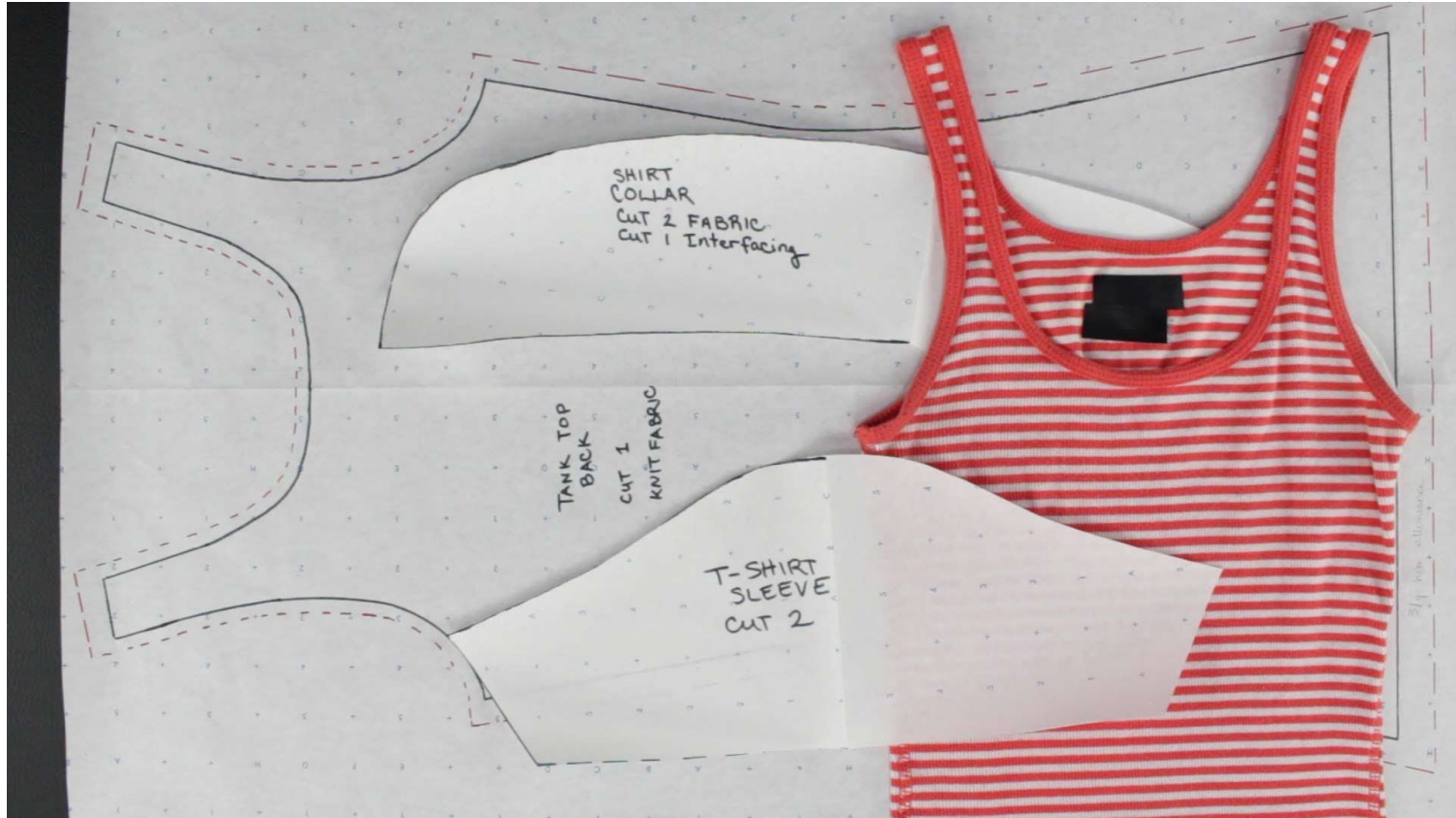


Seam allowance range: $\frac{1}{4}$ " - $\frac{1}{2}$ "

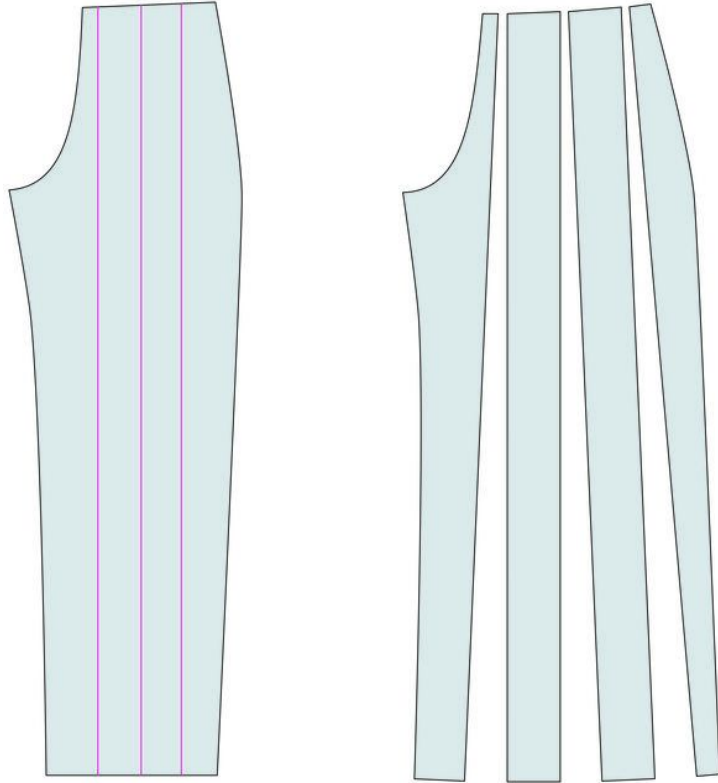


follow the guide
← on the sewing machine
or draw your own

Making your own patterns

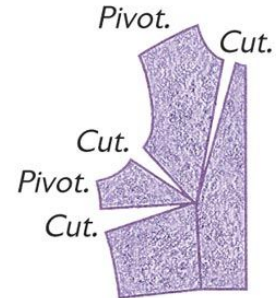
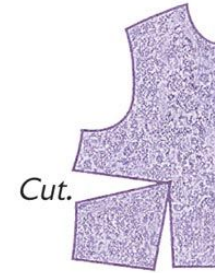
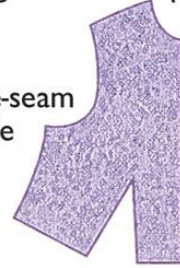


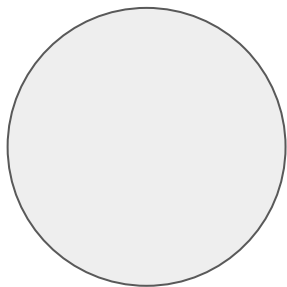
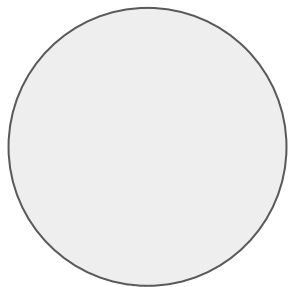
Slash and Spread Technique



Original front sloper

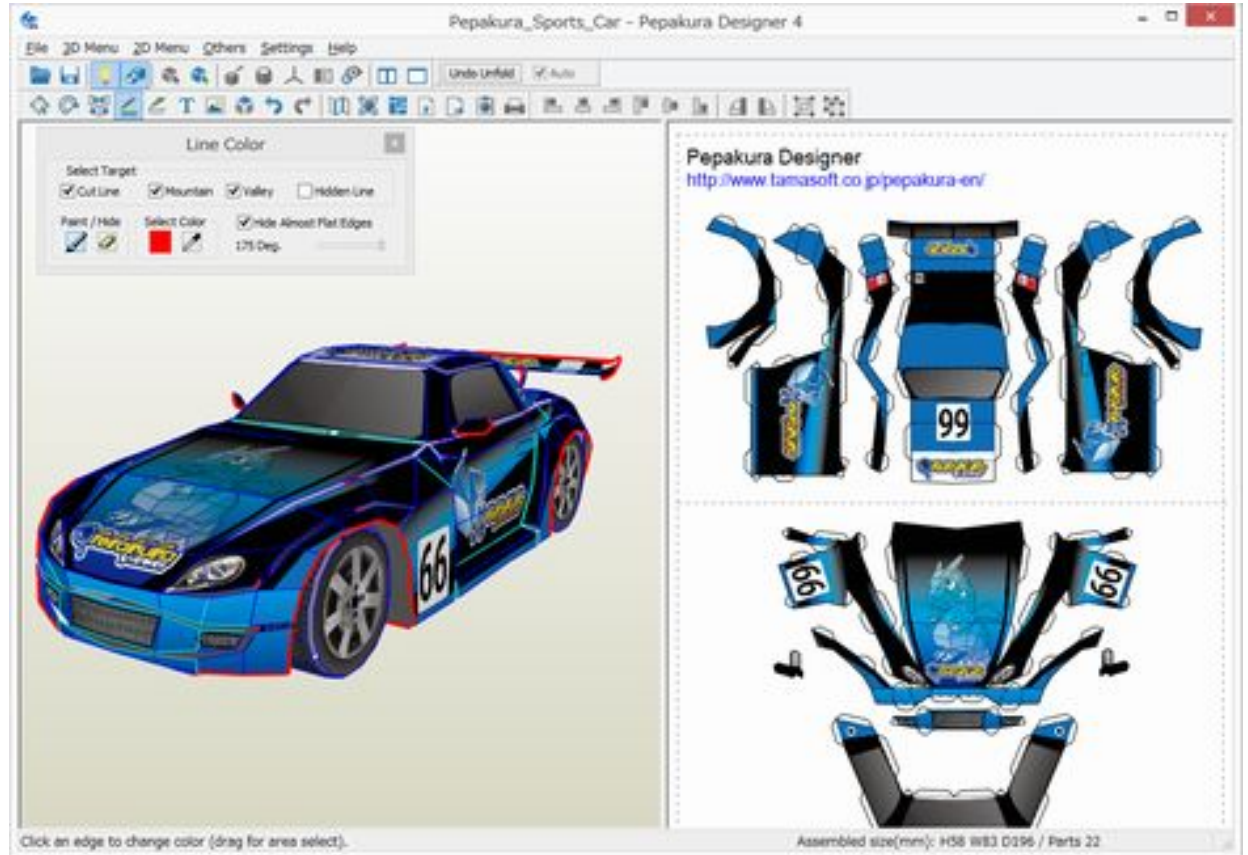
Side-seam angle





3D Models to 2D Patterns

Pepakura

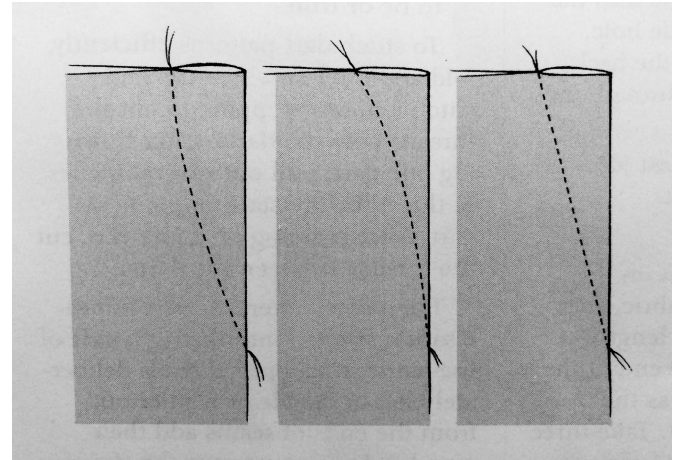


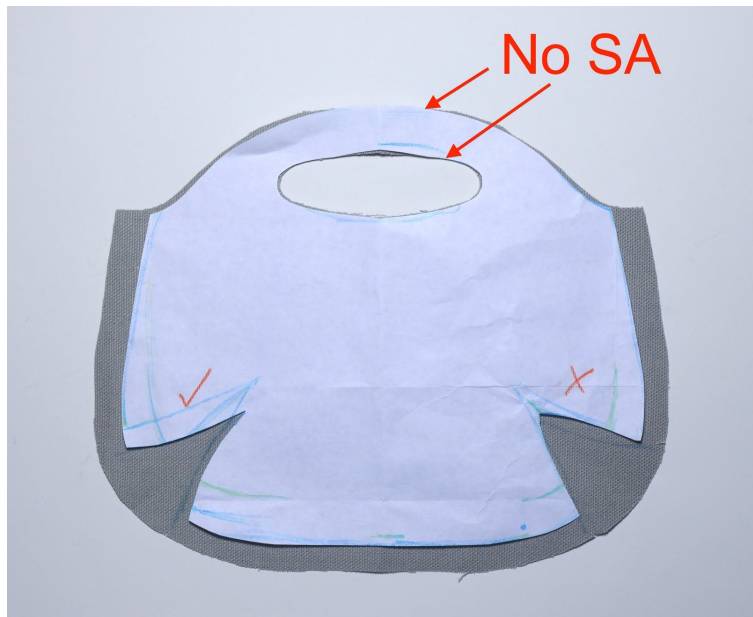


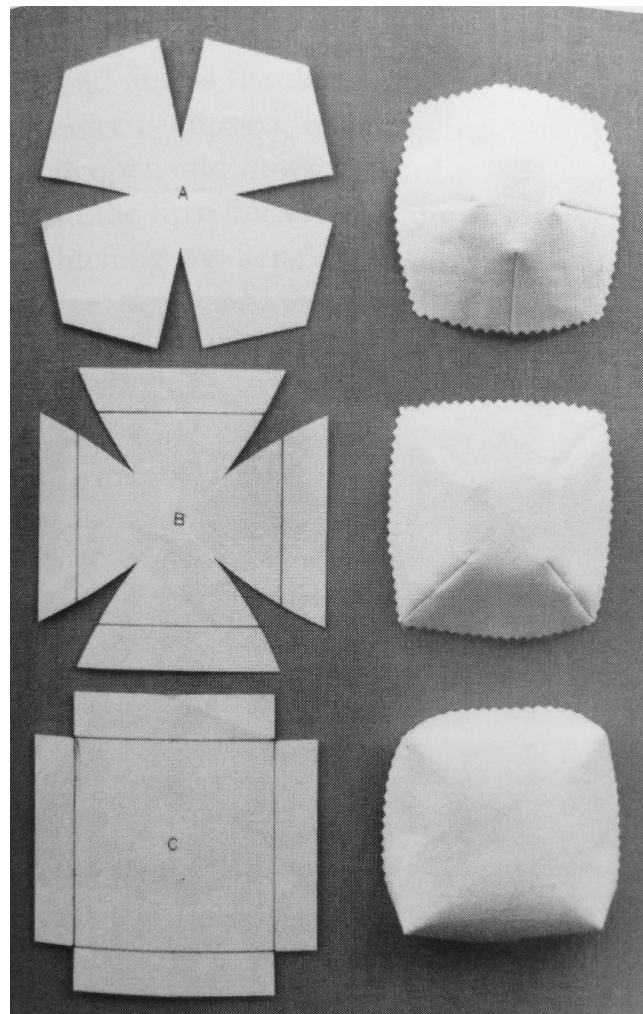
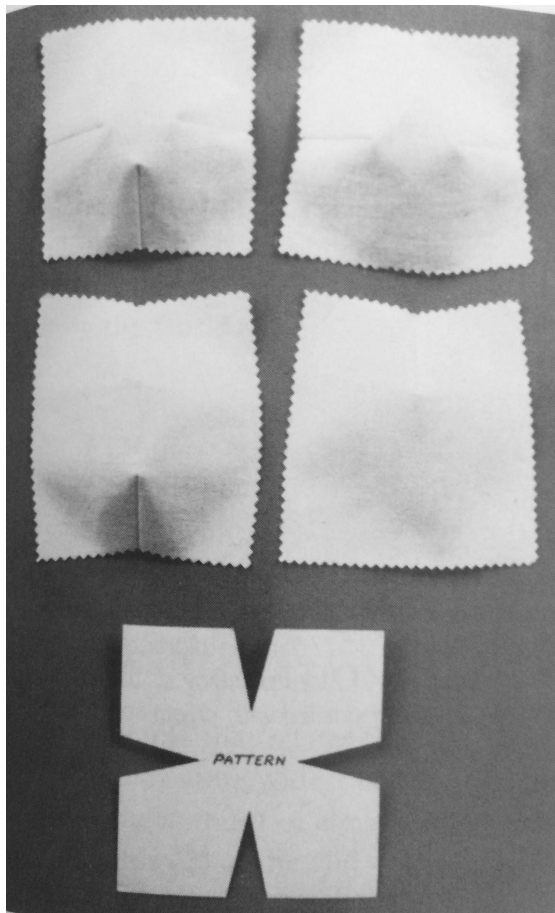
<http://www.instructables.com/id/Making-patterns-from-3D-objects-sans-computers-or-/?ALLSTEPS>

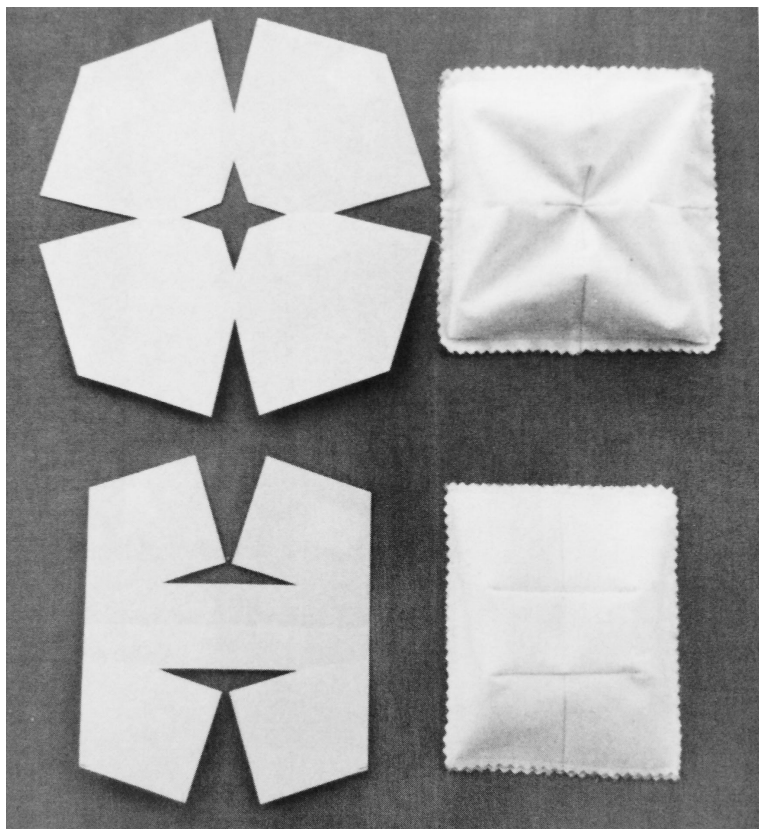
Darts

Segment of fabric folded (or removed) and stitched to create rises or drop in the structure











Demo: Darts

Create a pattern for making darts on a 6" x 6" piece of fabric.

Exchange your pattern with another classmate to sew another dart.