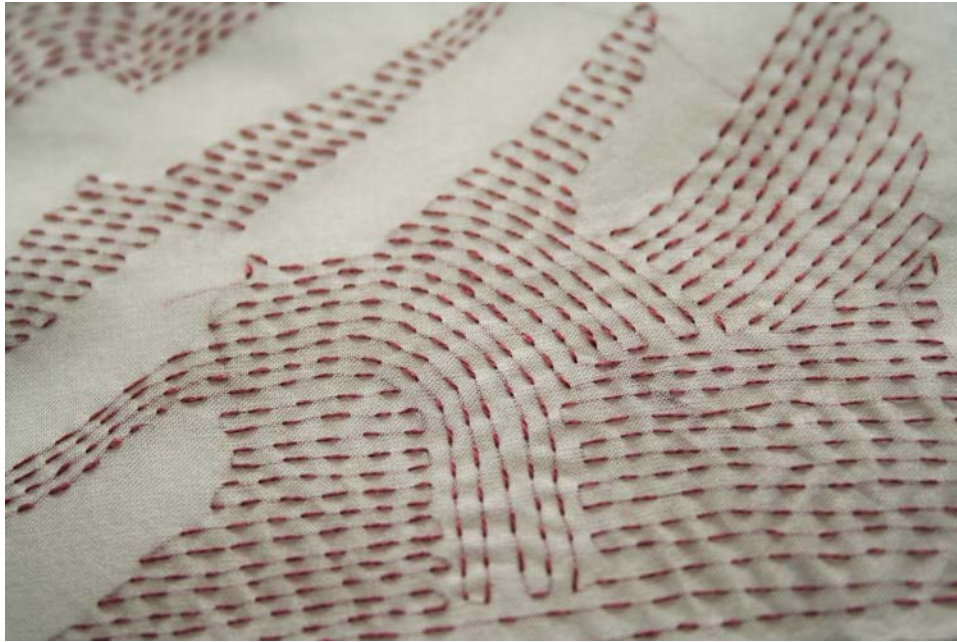




Fabric Surface Manipulation

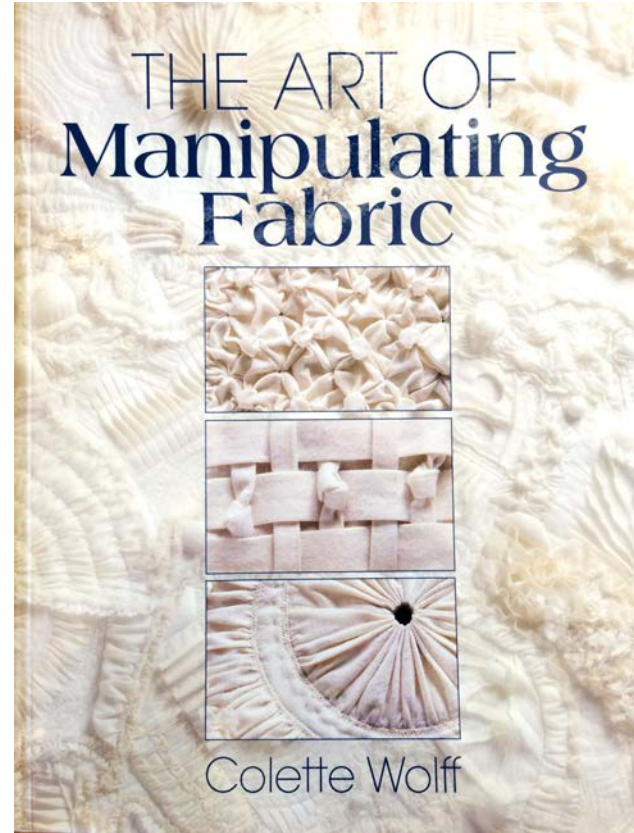
What is it?



Changing the surface of a textile through sewing, cutting, folding.

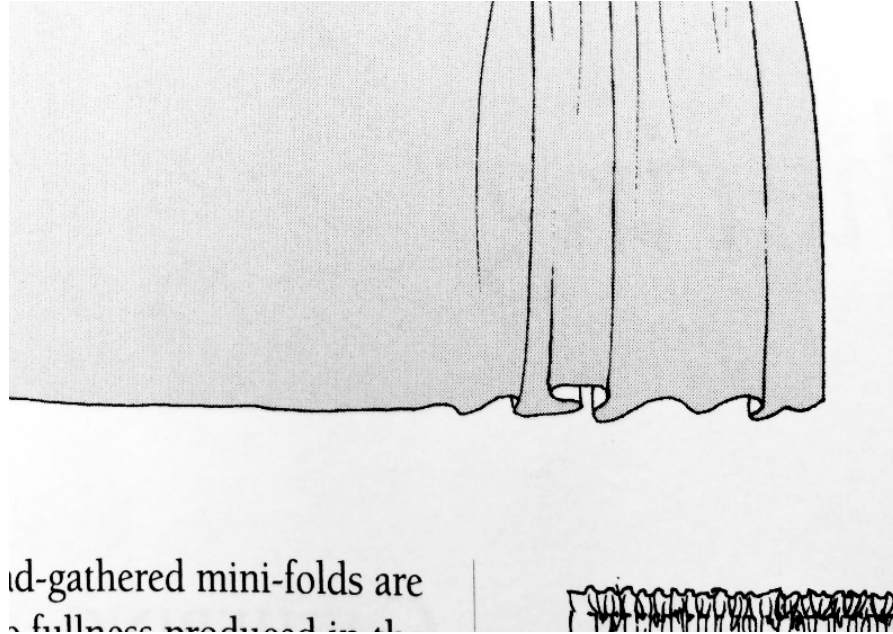
The Art of Manipulating Fabric

Colette Wolff

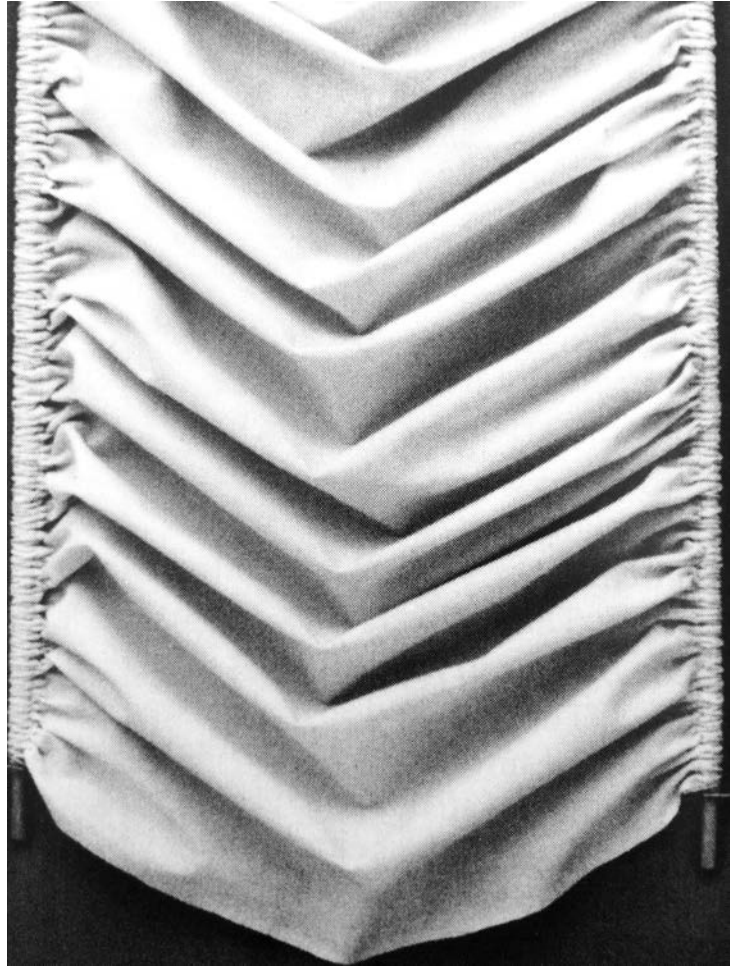


Gathering

Gathering: Fabric drawn together over rows of stitches

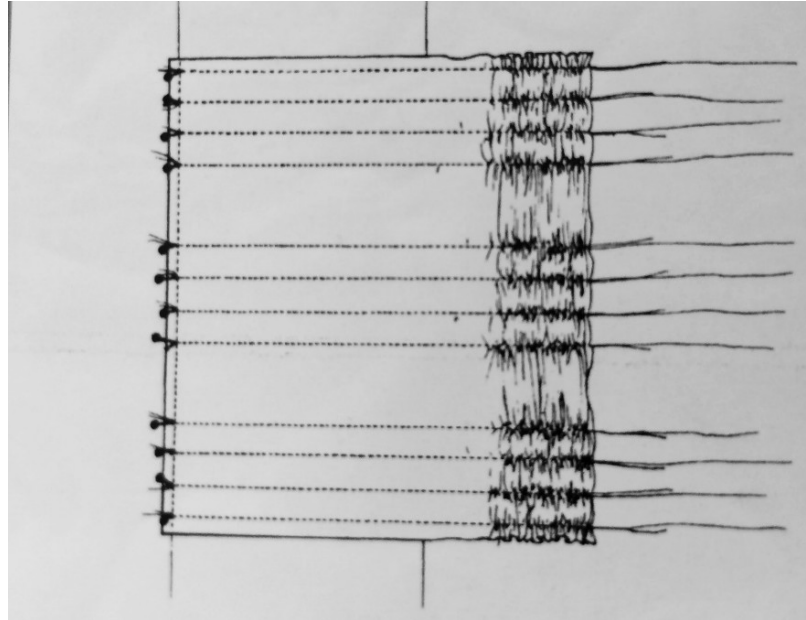


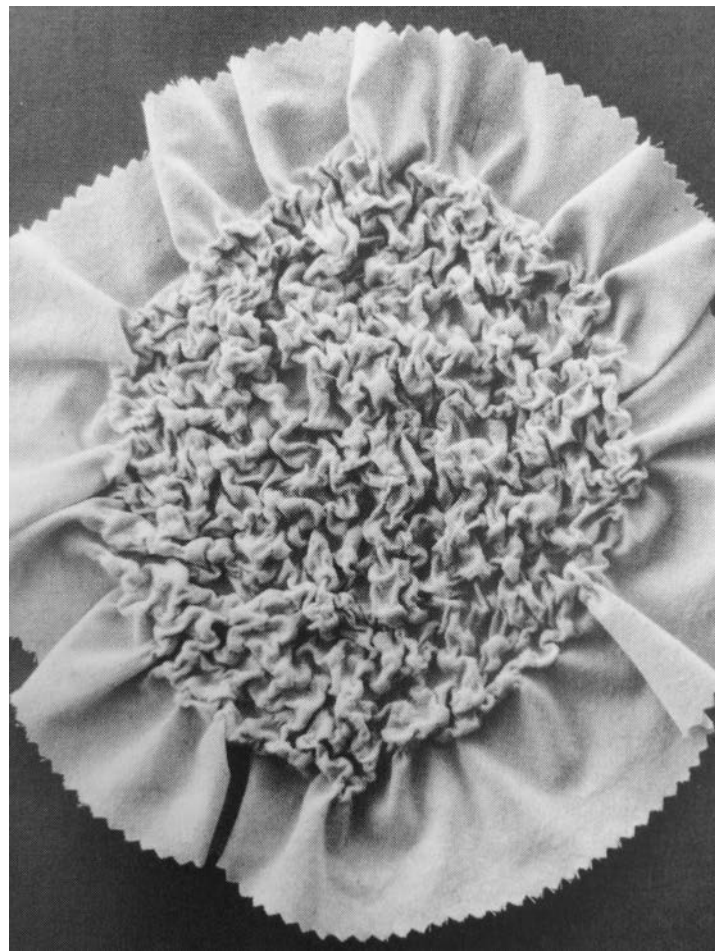
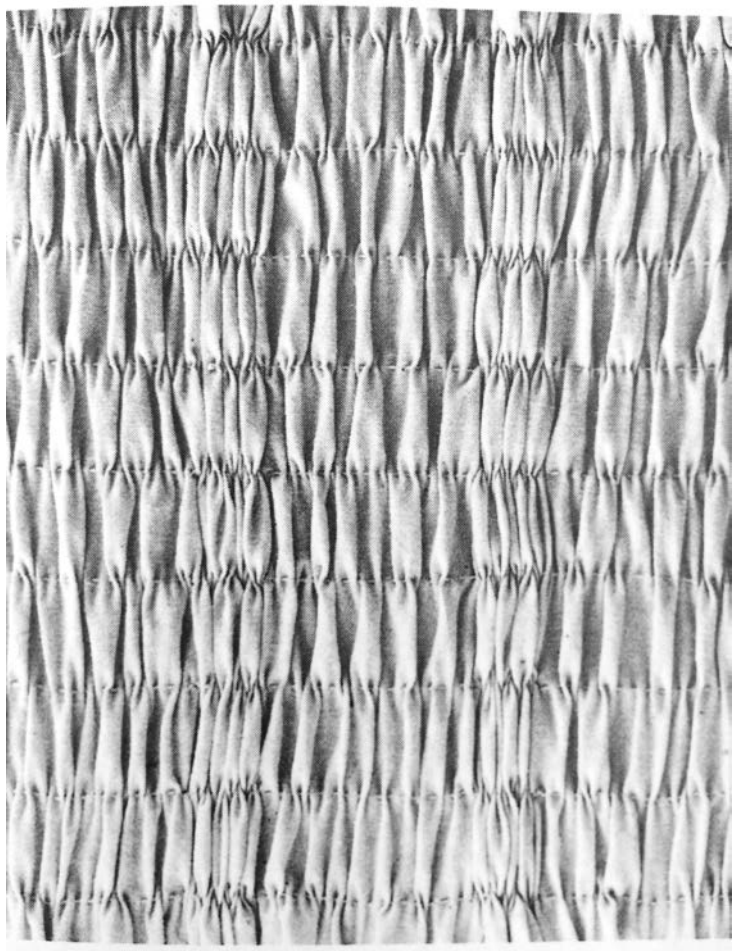




Shirring

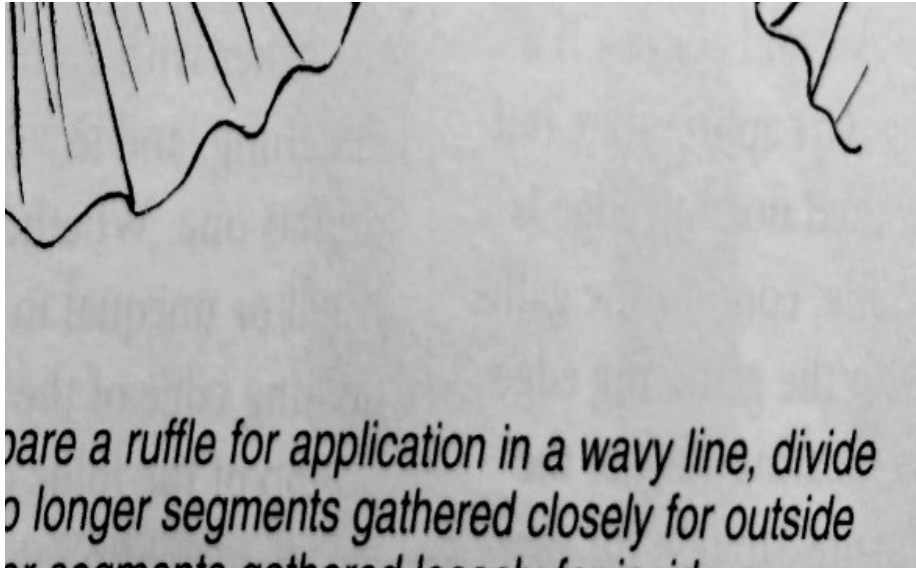
Fabric contracted to a smaller size when gathered on multiple rows in designated areas in parallel rows

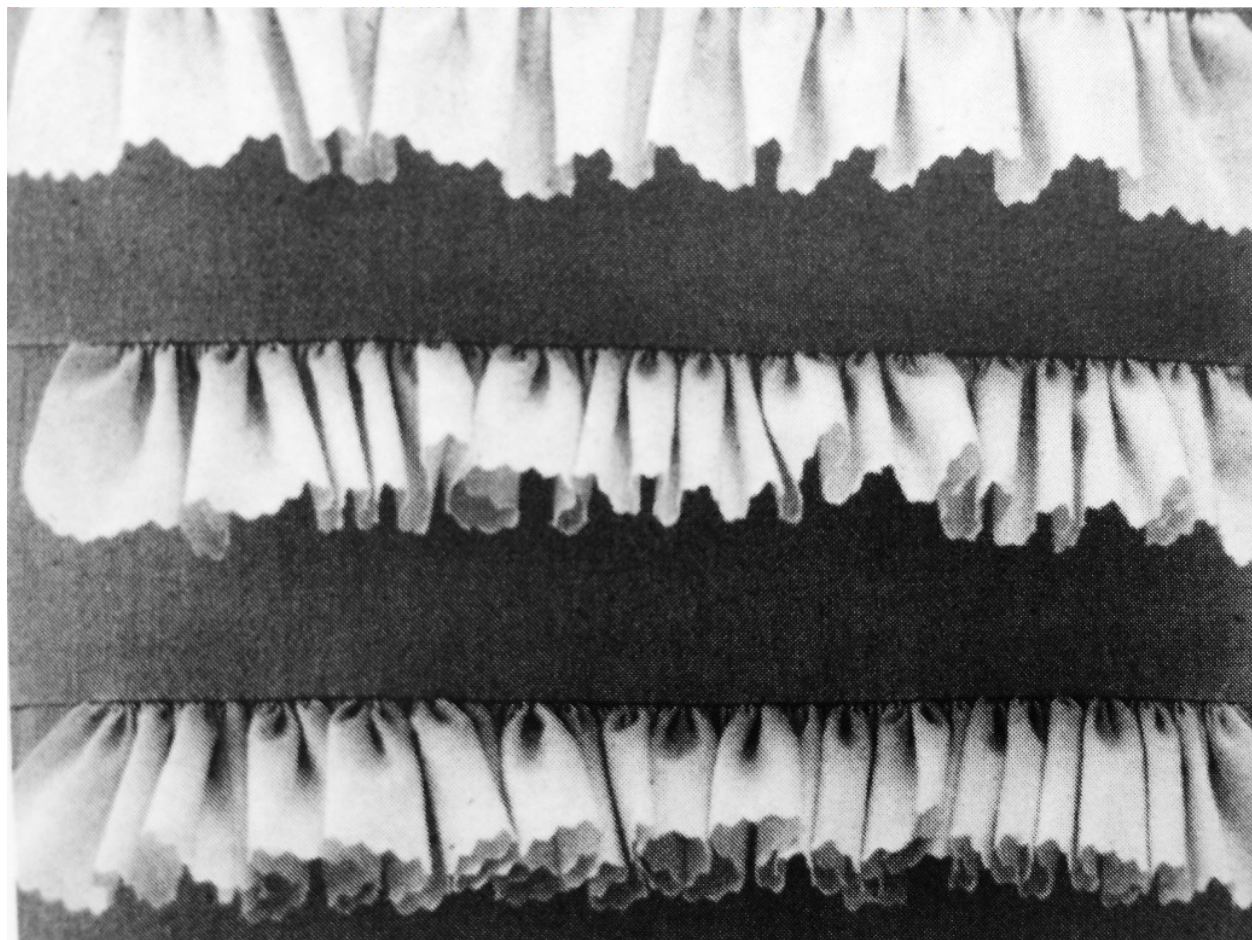


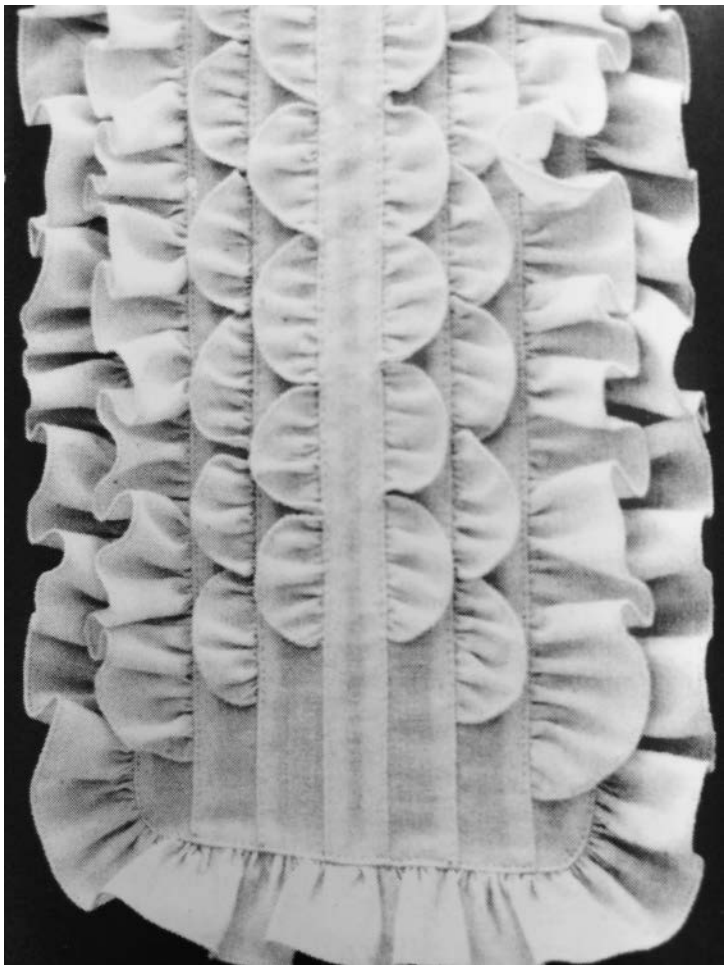


Ruffle

Strip of fabric with one long edge gathered to a shorter target and attached to flat fabric

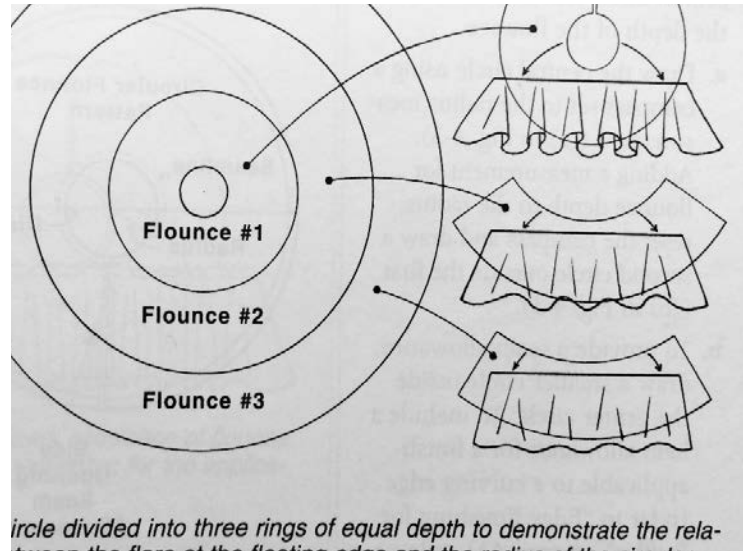


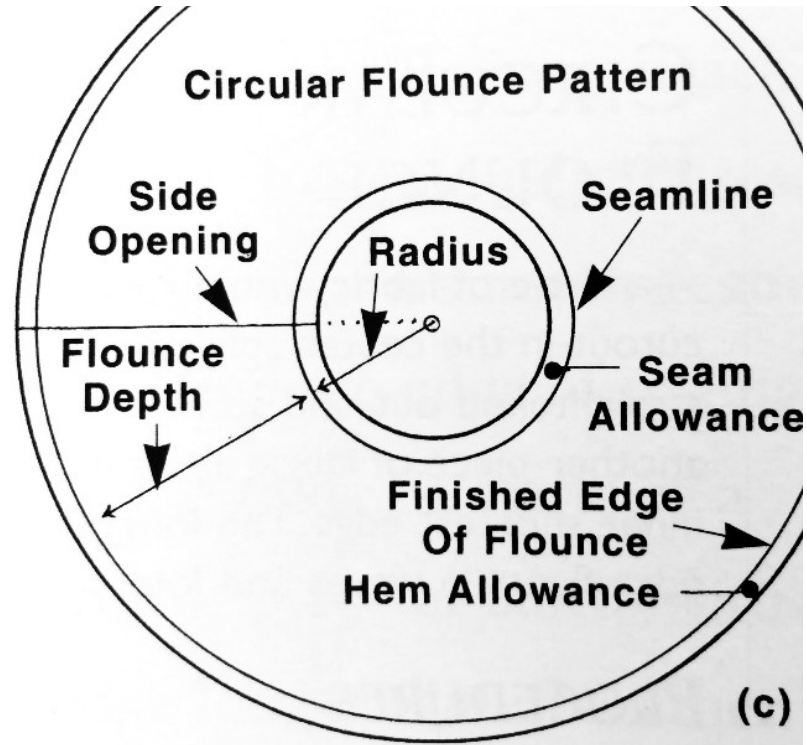


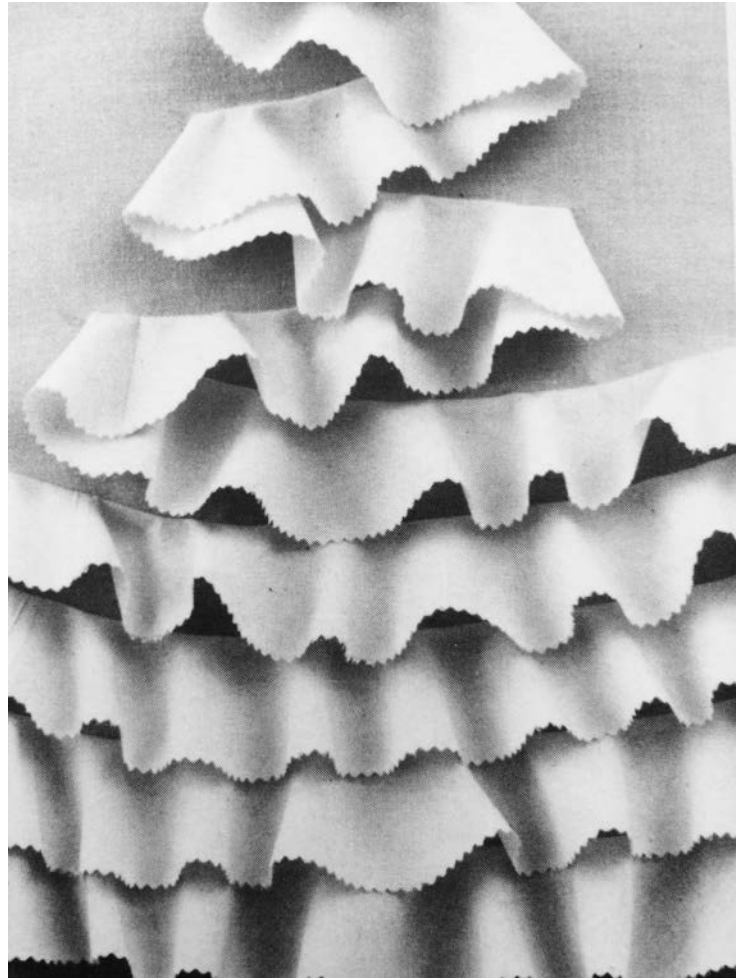


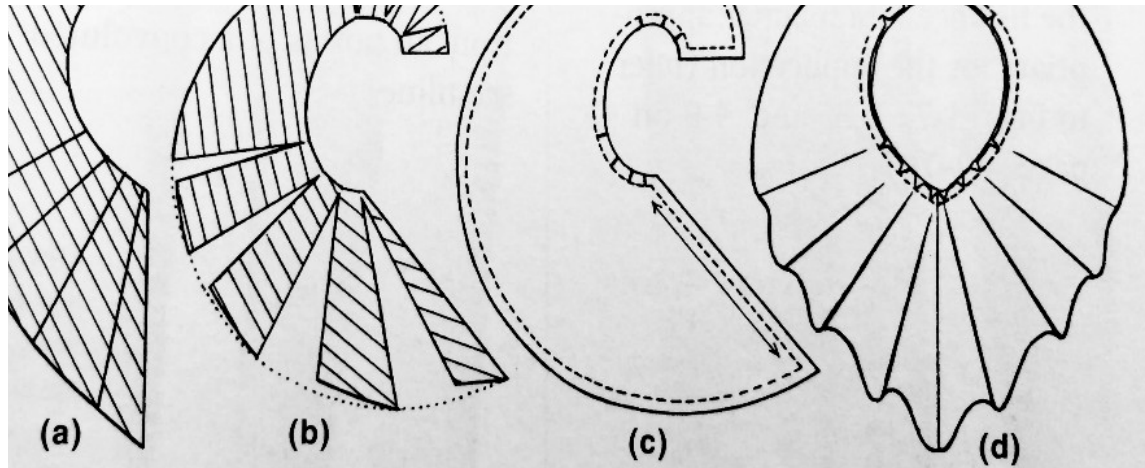
Flounces

Circle of fabric with a round cutout in the center, split open, straightened out, and seamed to another piece of fabric along its inner, shortest edge.



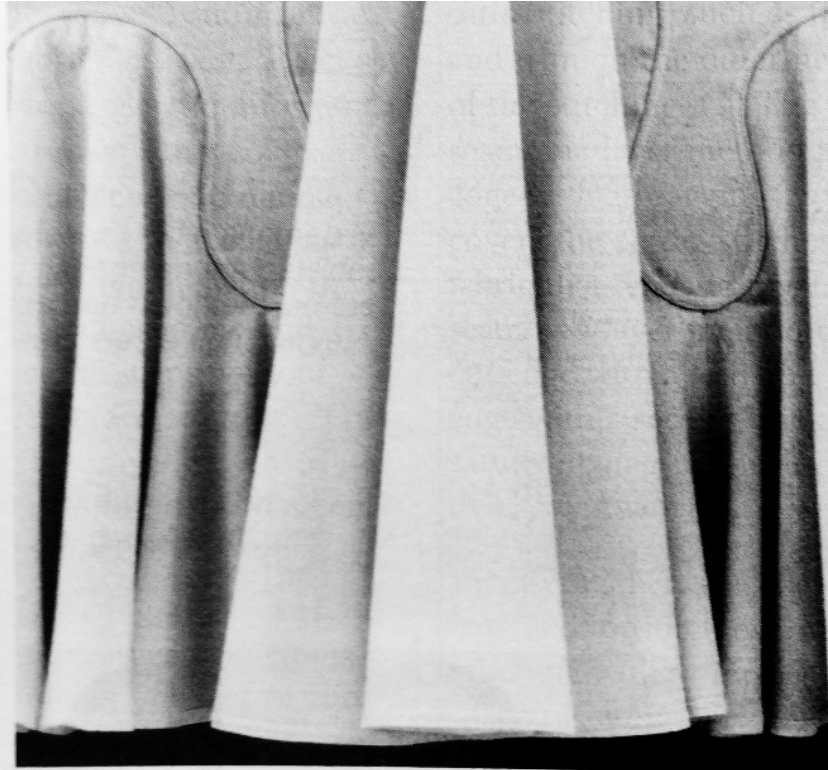




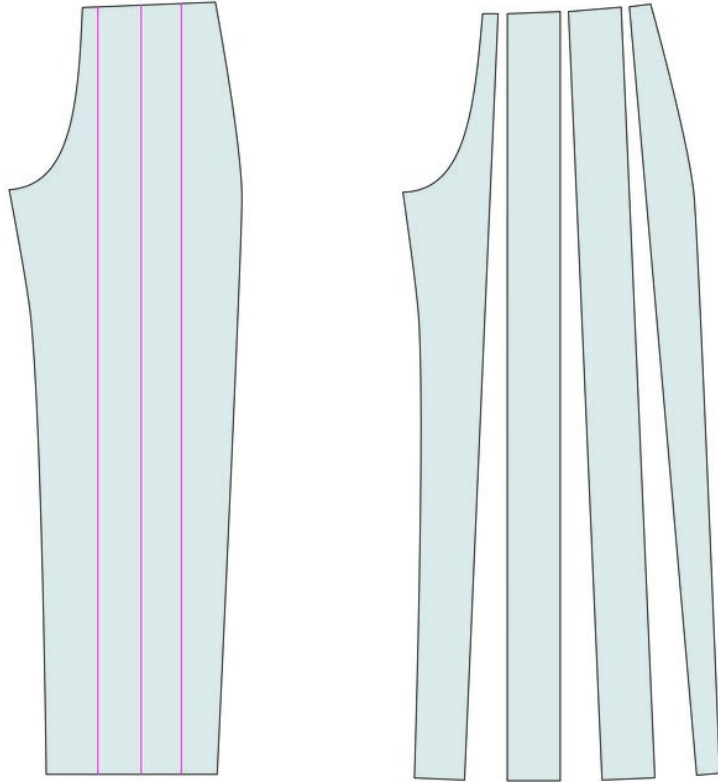


4-19. (a) Target pattern with lines indicating fold locations, (b) slashed and equally spread. (c) Final pattern with stitching line, clipping, and grainline. (d) Controlled flounce made from the pattern.

orate flounce
o spread into
folds from an
bed seamline.
m, zigzagged,
floating edge.

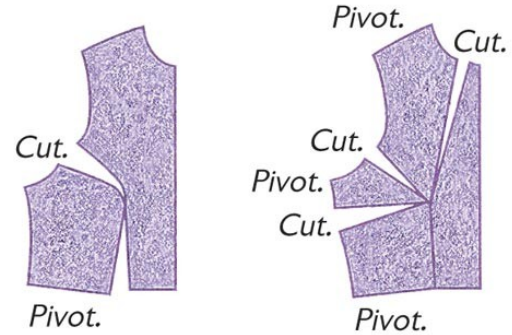
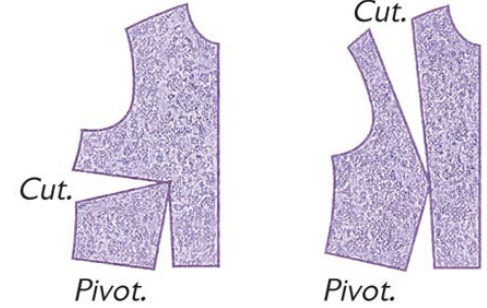
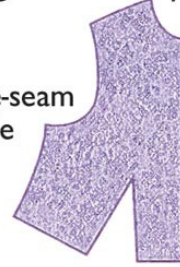


Slash and Spread Technique



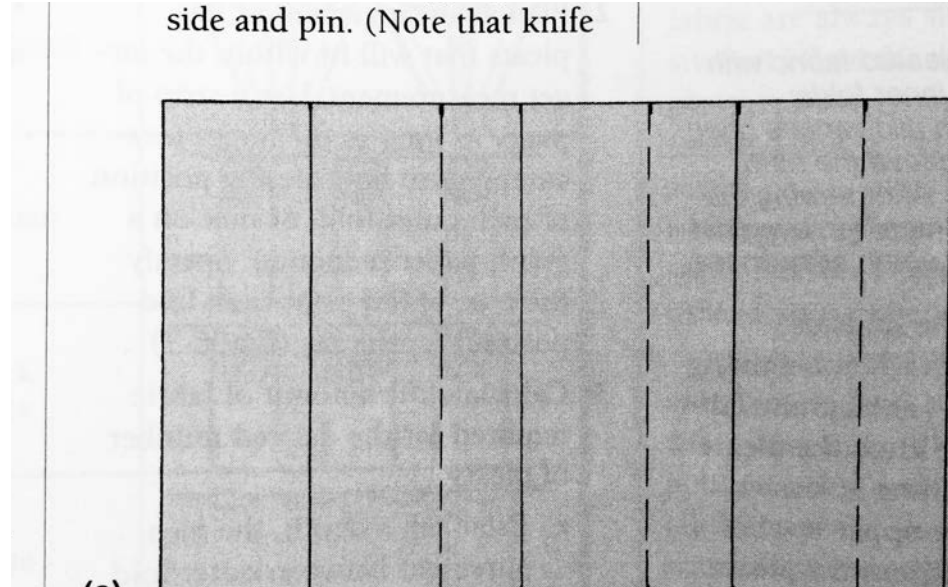
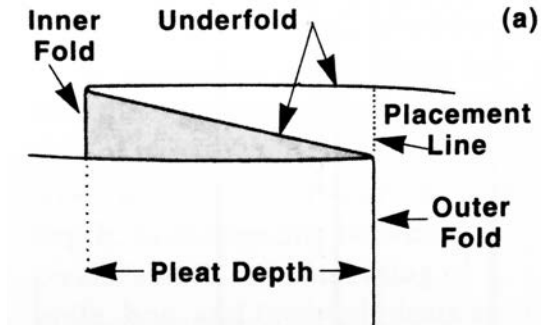
Original front sloper

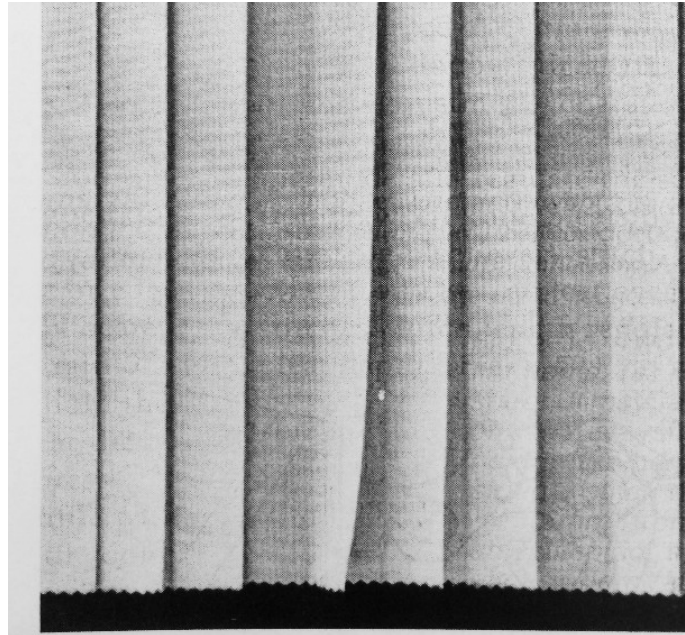
Side-seam angle



Pleating

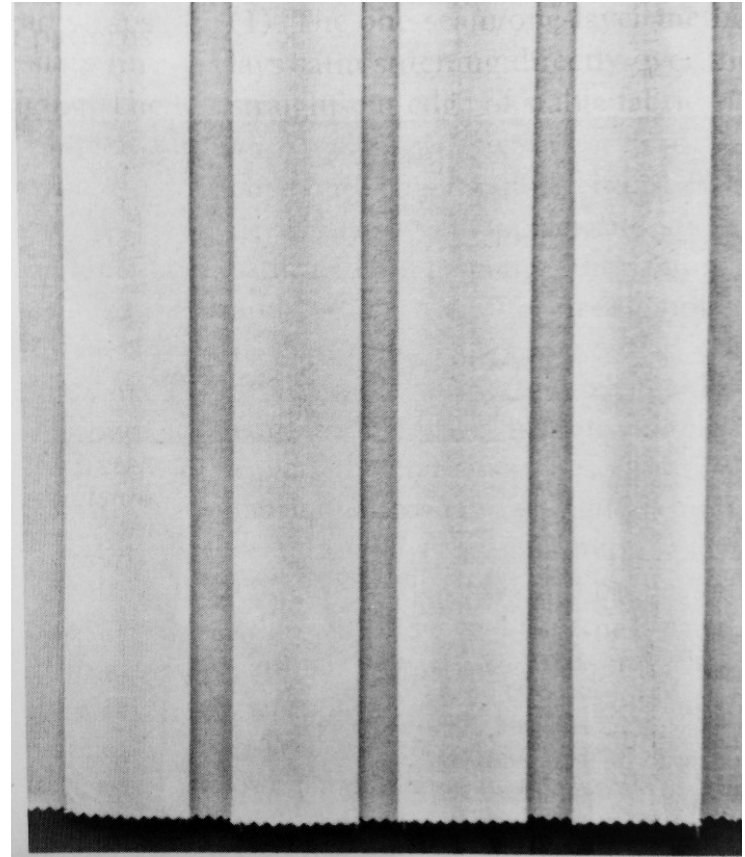
Folds pulled up from the surface of the fabric and held by stitching at the top and released below



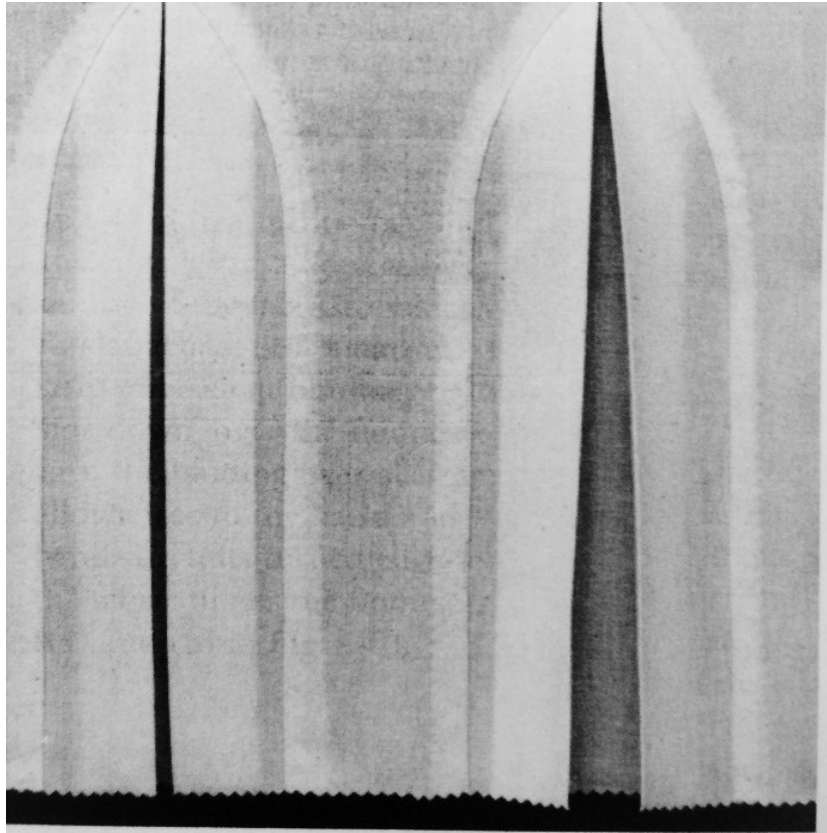


VI-2—*Pressed knife pleats, clustered in groups of three*

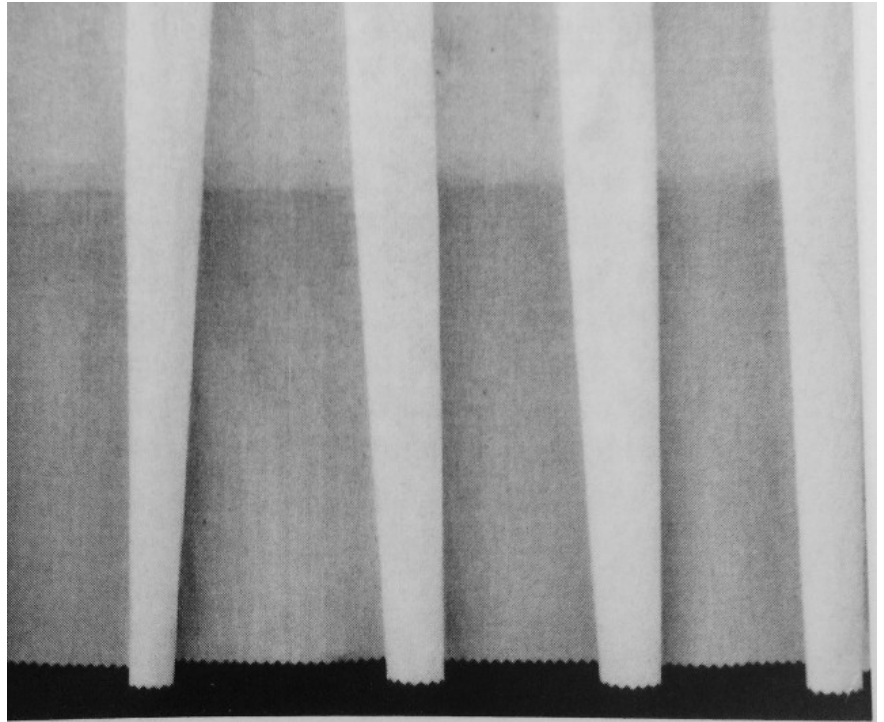
FLAT PLE



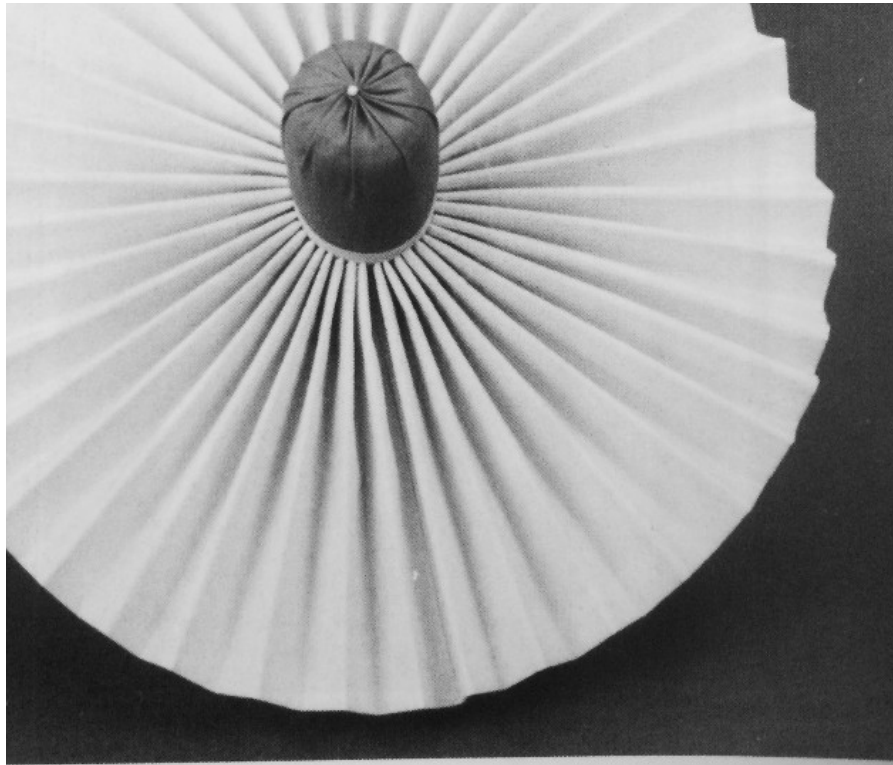
VI-4—*Four box pleats edgestitched along the outer folds.*



—Two inverted pleat inserts set into curved-top cutouts.



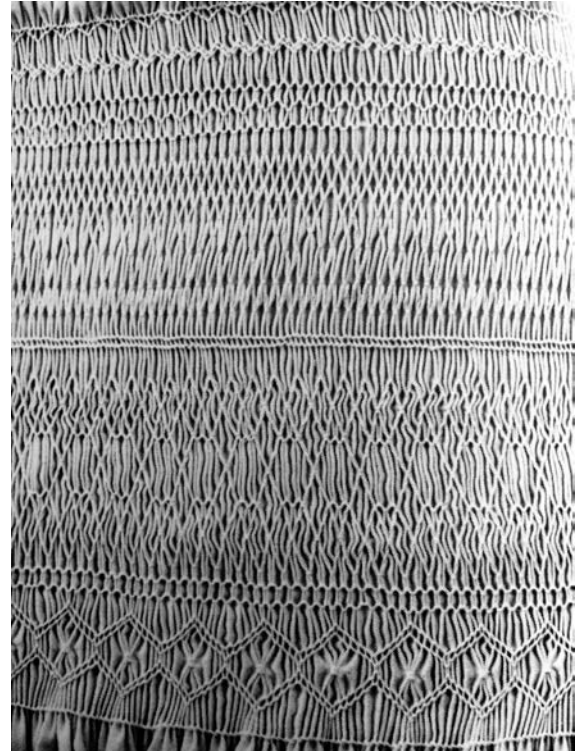
Soft cartridge pleats sewn to a stay visible behind the draped
front of folds that head each pleat.

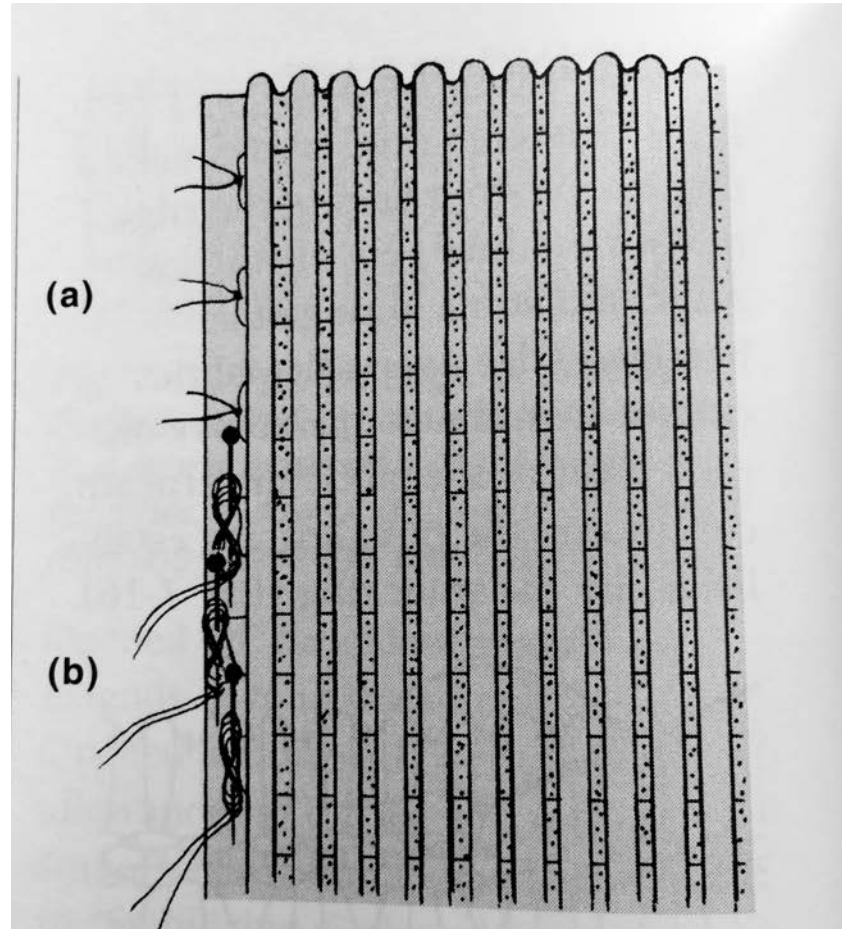
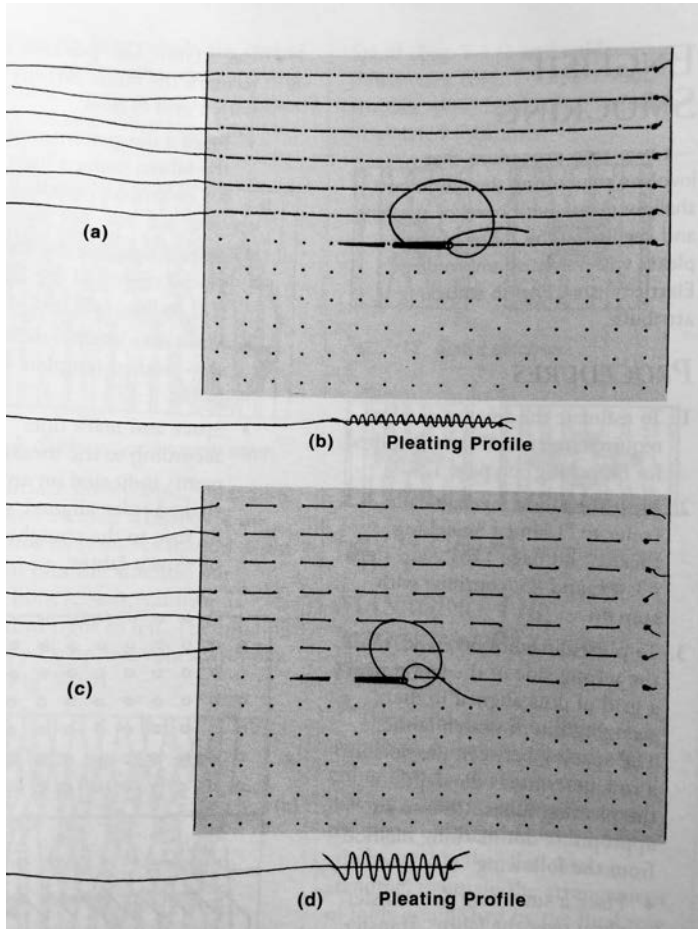


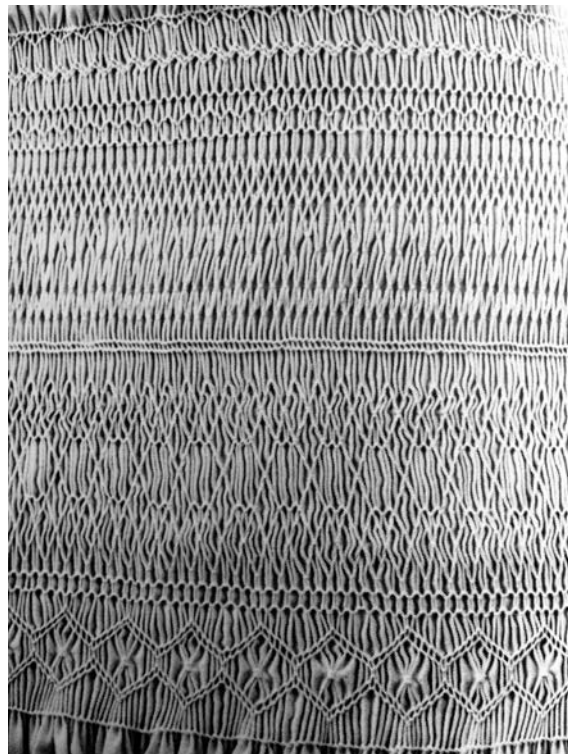
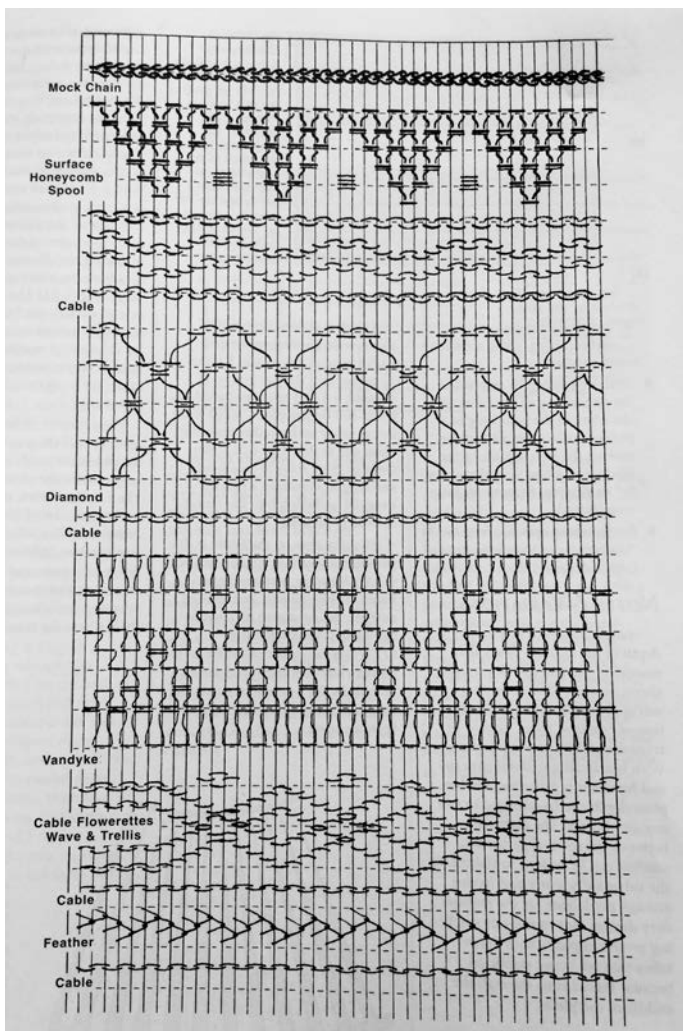
Art of Manipulating Fabric

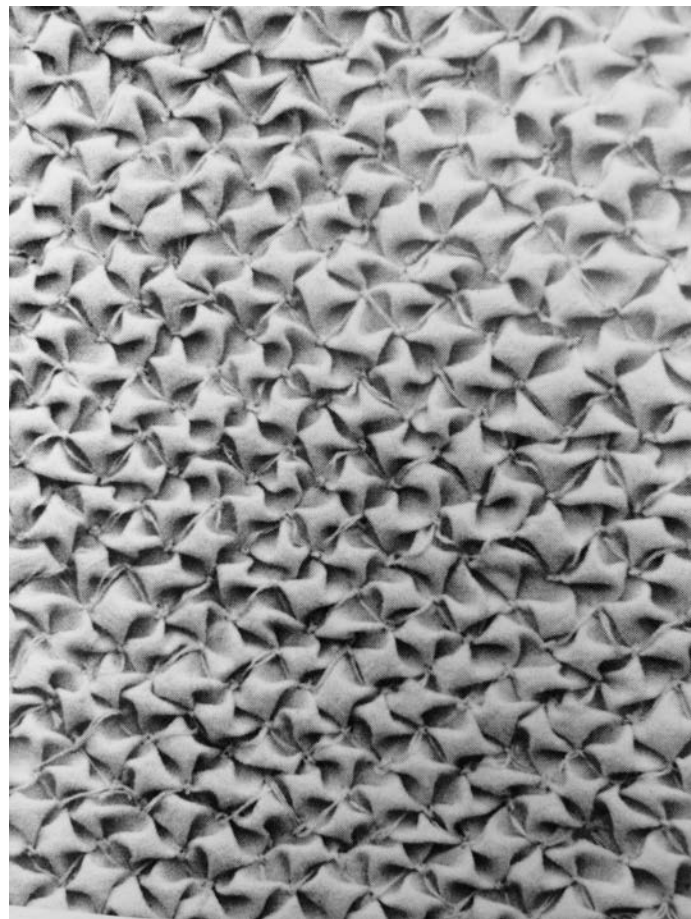
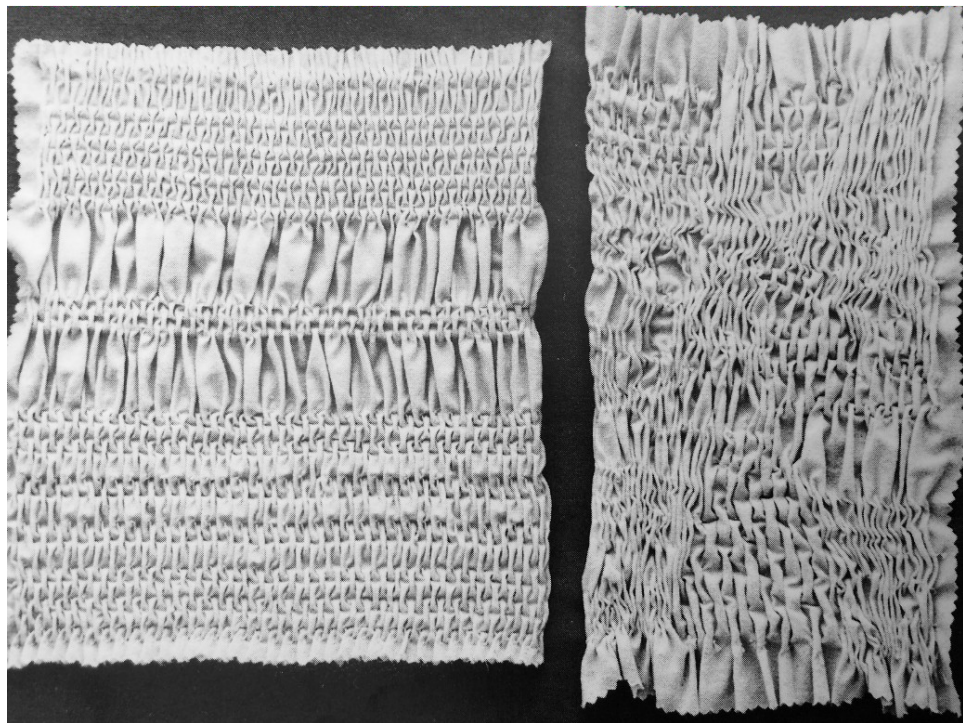
Smocking

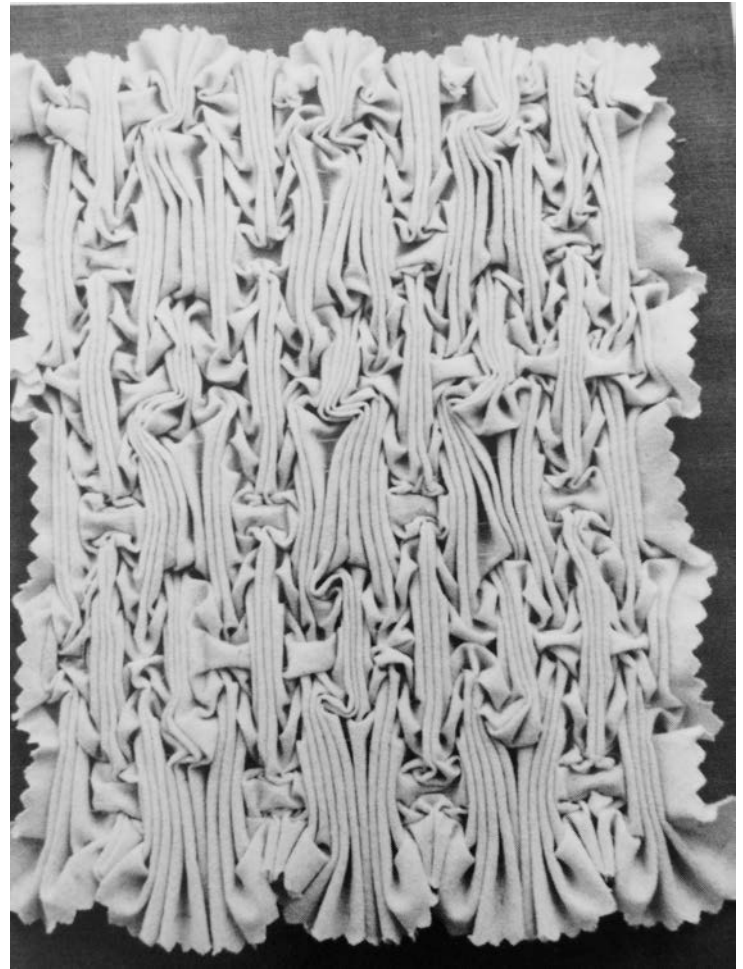
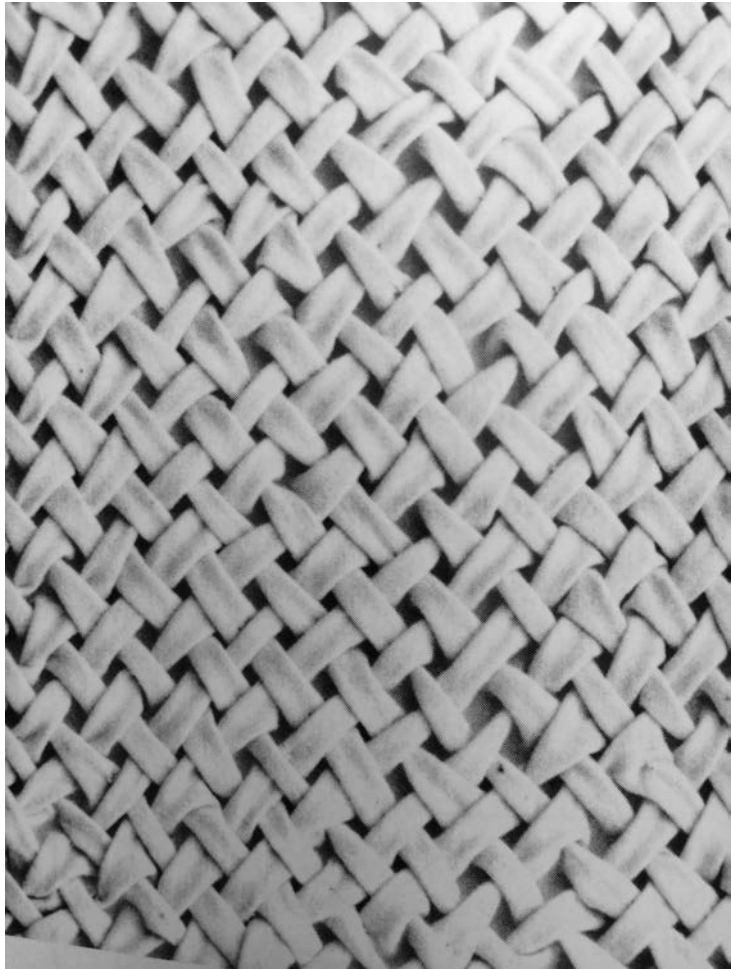
Small pleats that are structured via stitching and regulated with rows of embroidery (English smocking, Direct smocking, North American smocking, Italian smocking)











Tucking

Folds pulled up from the surface of the fabric and held by stitching from one end to the other

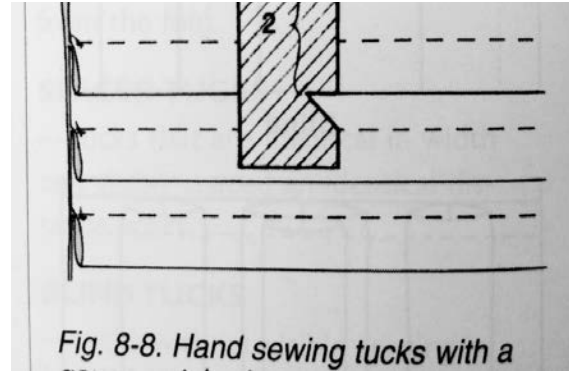
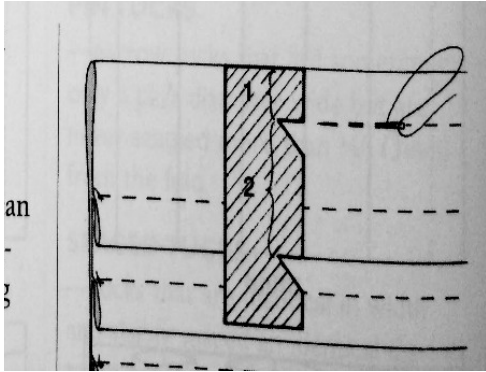
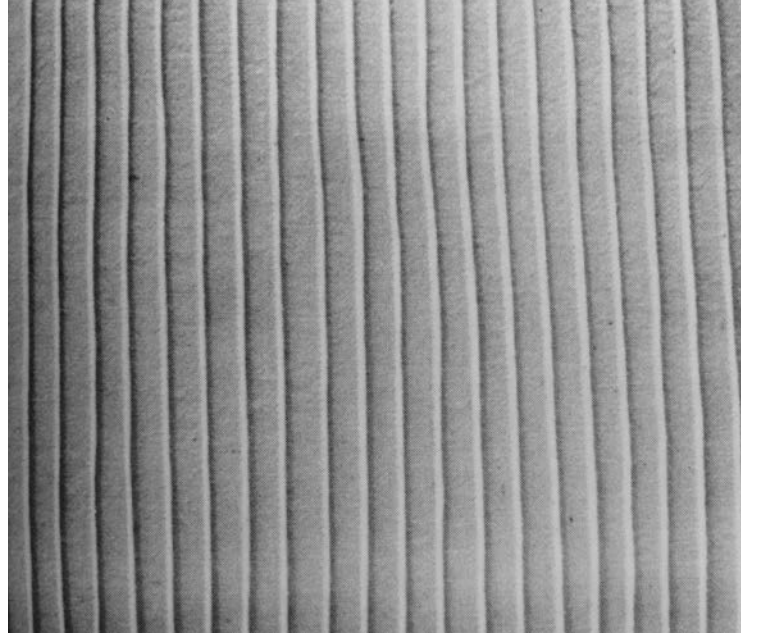
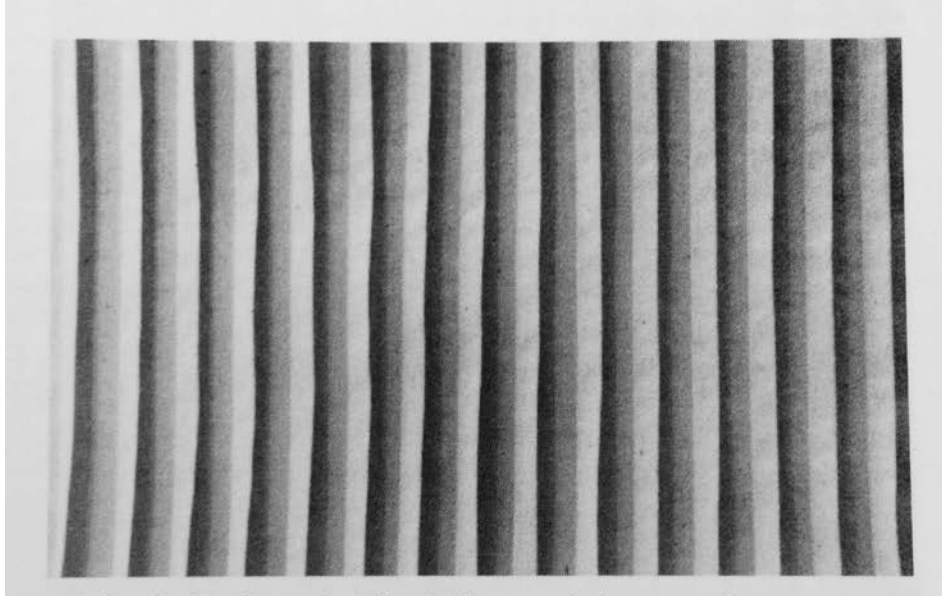
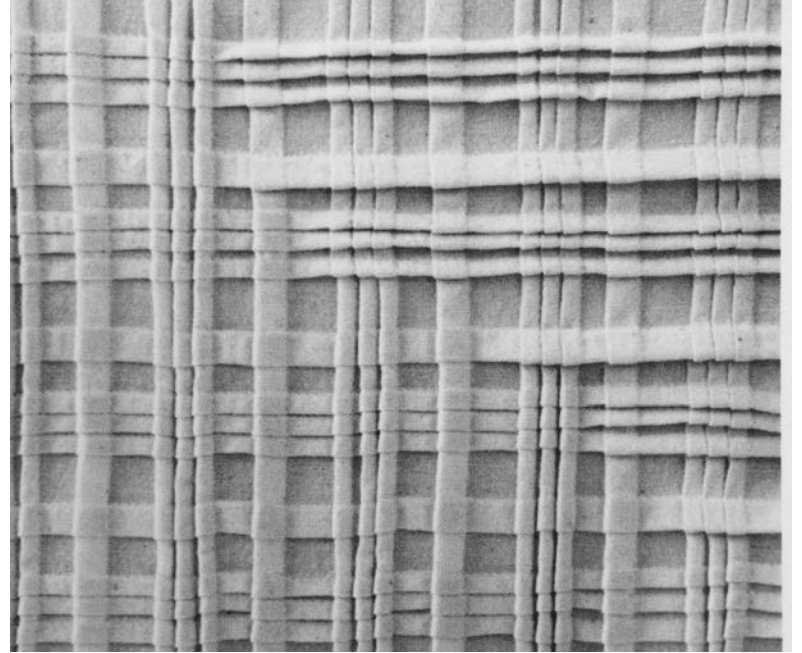
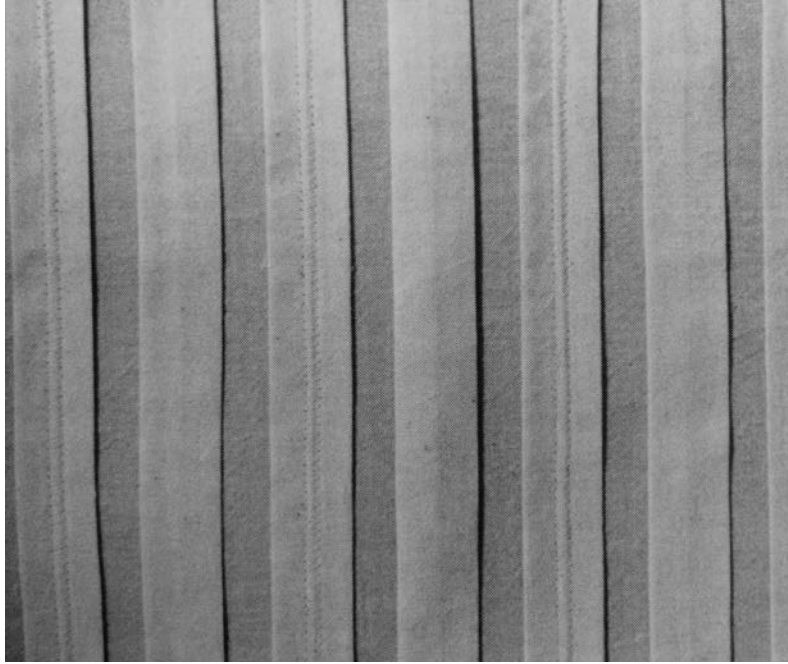
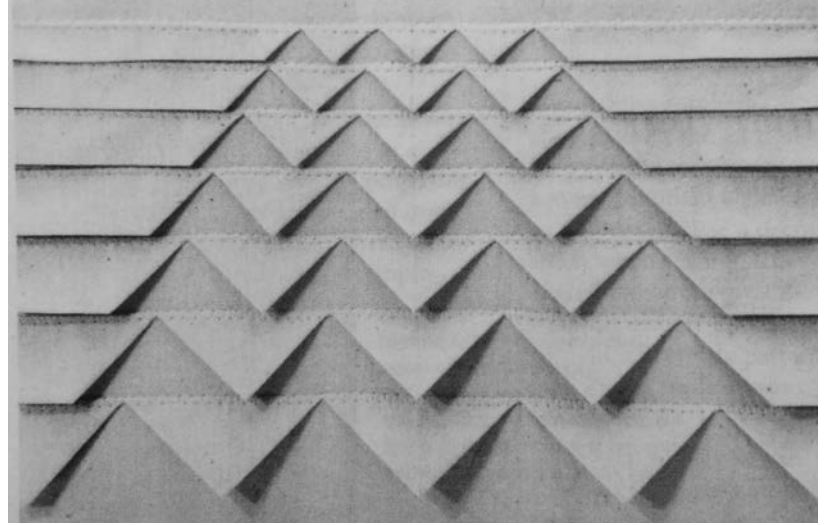
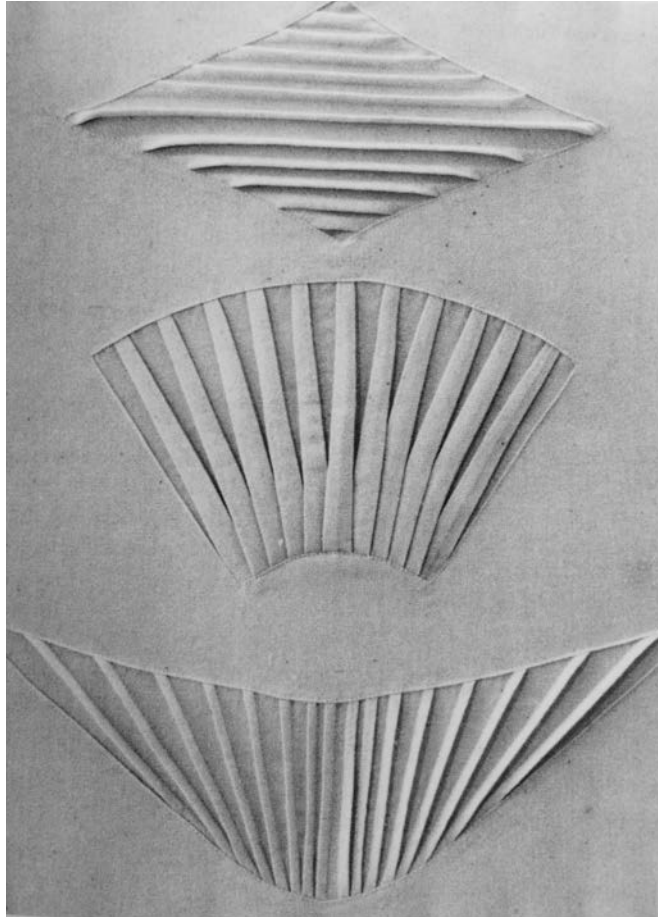


Fig. 8-8. Hand sewing tucks with a

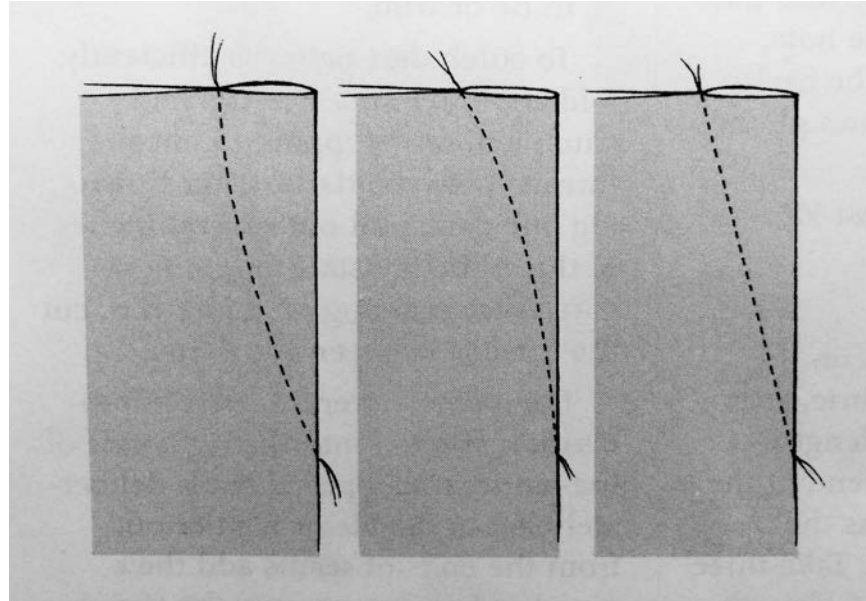


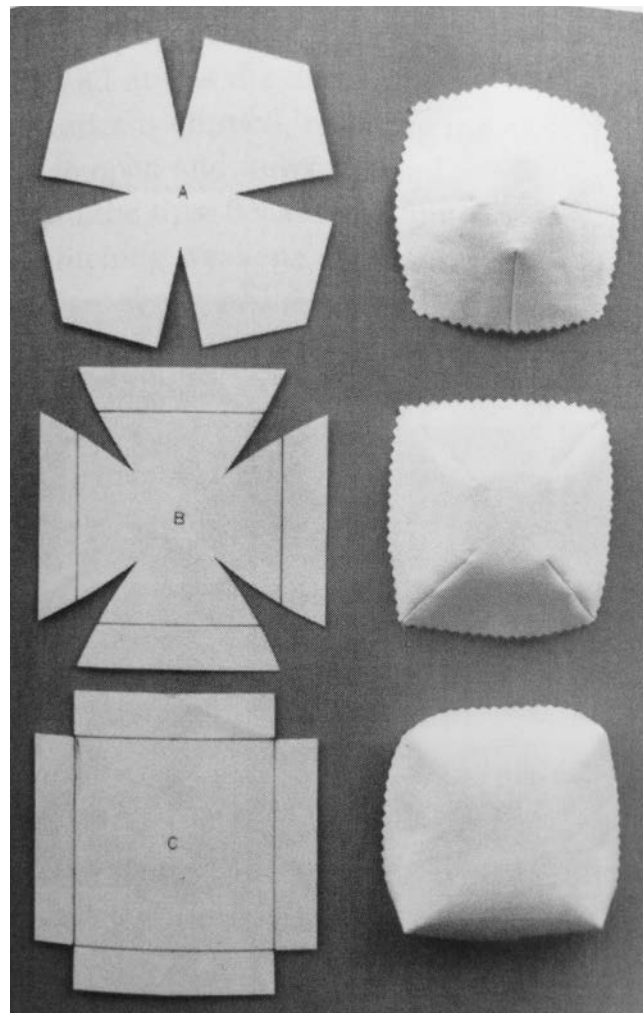
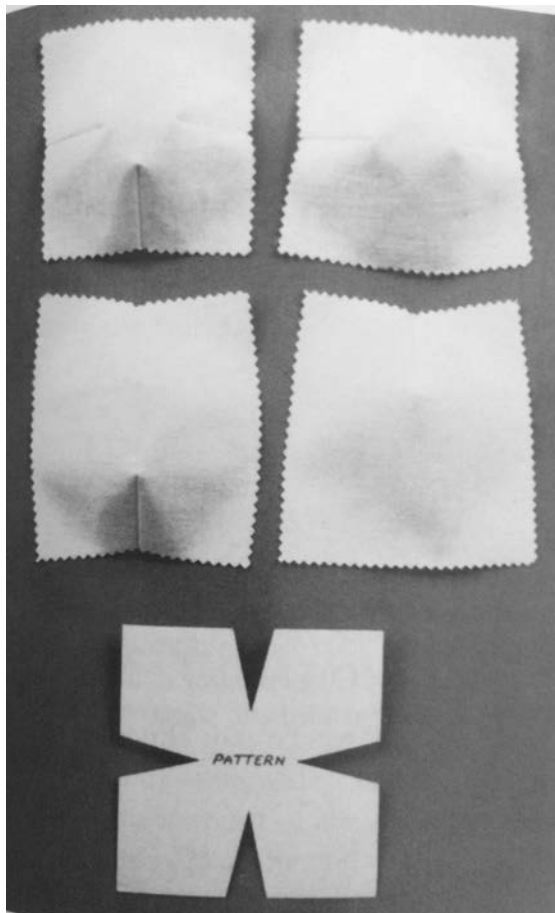


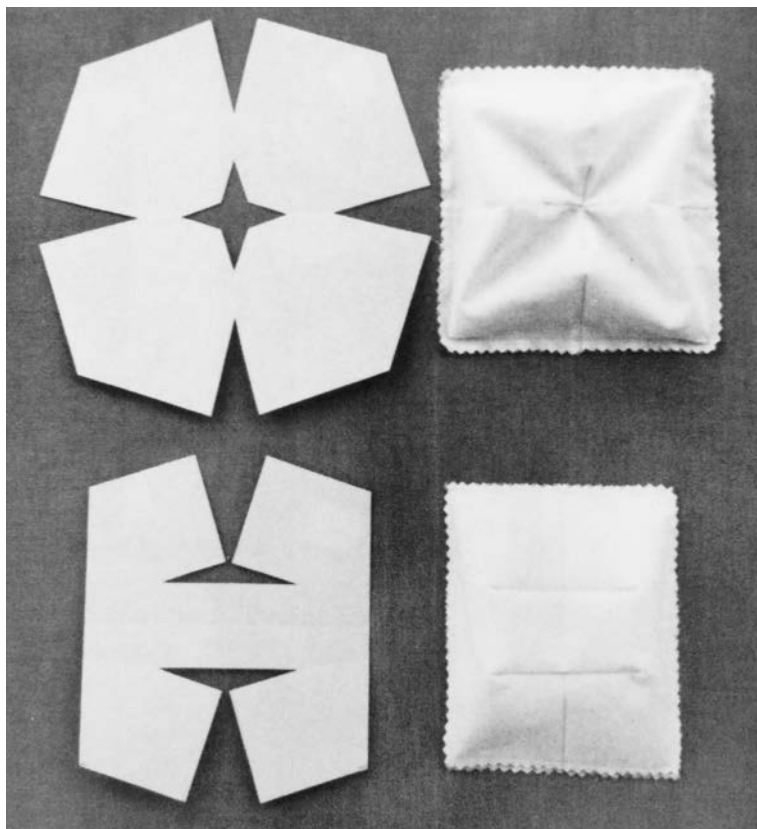


Darts

Segment of fabric folded (or removed) and stitched to create rises or drop in the structure

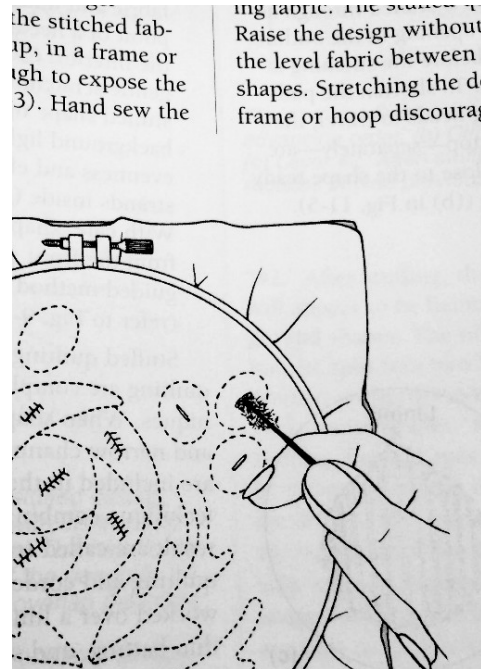




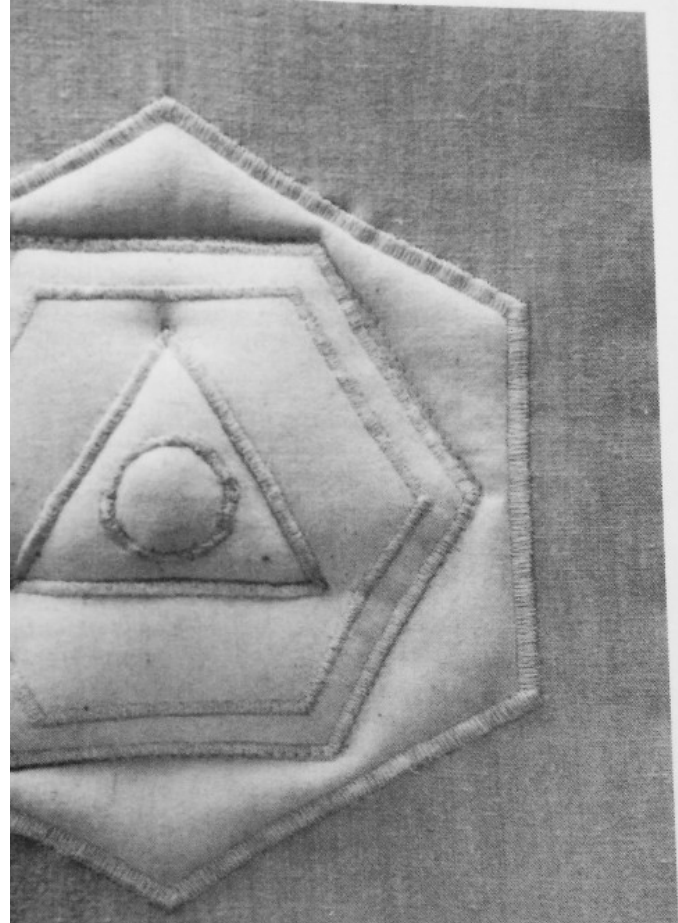
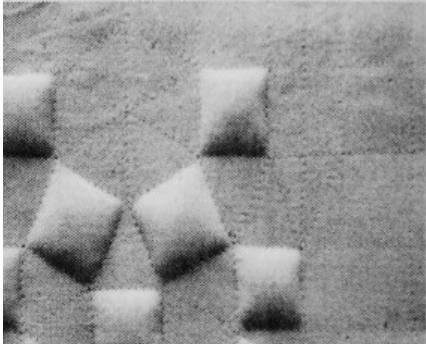


Stuffing

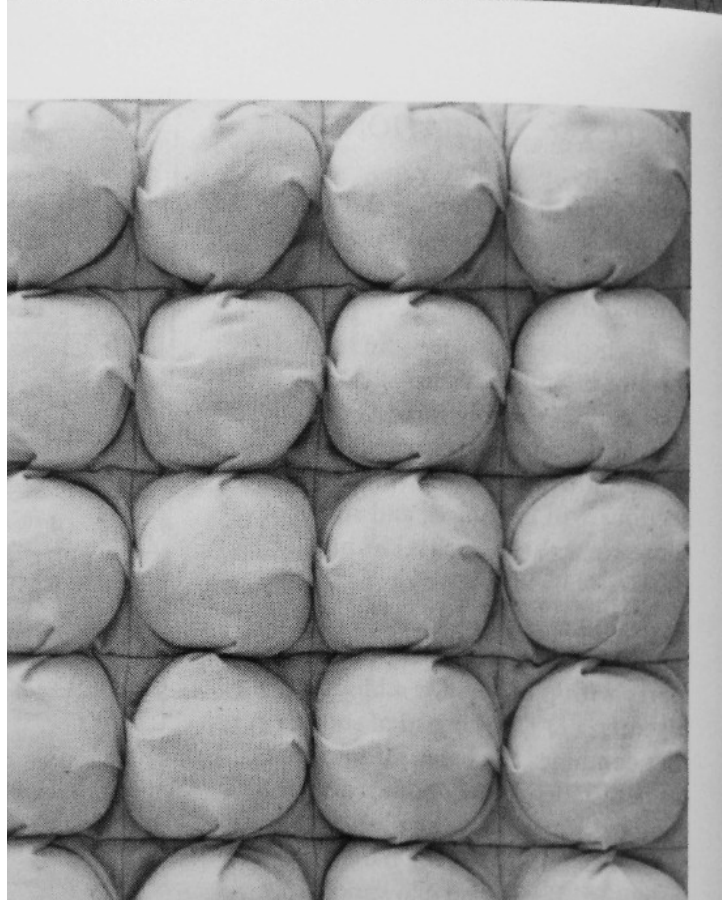
Filling stitched casings in the fabric with material



design that includes a looped row
of corded quilting between the
stuffing-raised figures (trapunto).



X
ar
fe
st
h
t



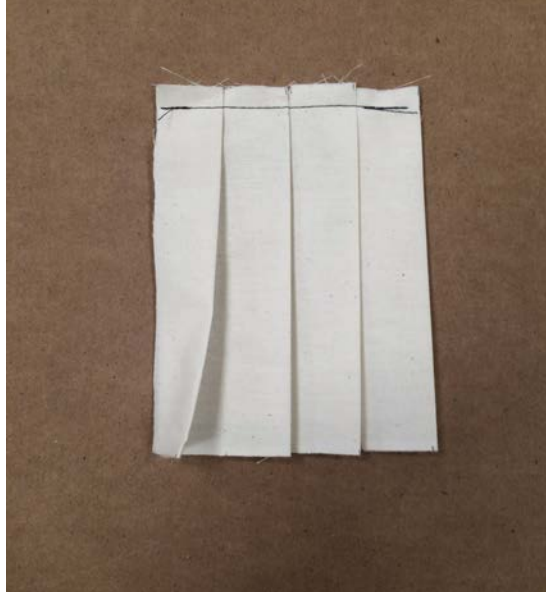
Demo Projects



Gathering

6" x 4"

8" x 4"



Pleating

5" x 12"



Darts

6" x 6"