

SolidWorks Intro Part 1

Dave Touretzky and Susan Finger

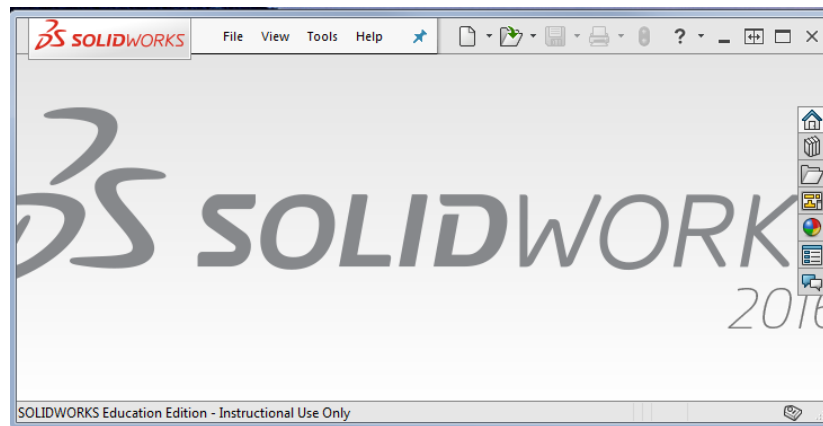
1. Getting Started

1.1 Log in

1. Login on the windows side
2. Log in using your Andrew ID.

1.2 Run SolidWorks

Search for, then run: **SolidWorks 2016 x64 Edition**



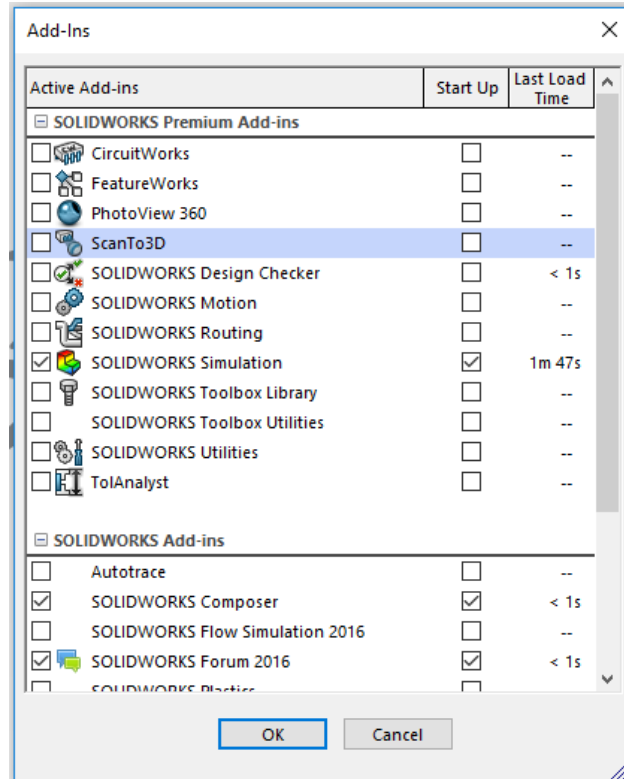
1.3 Surf the SolidWorks menus

Whenever you open a new software package, you should surf the menus just to see the sorts of things the software can do. Check out the buttons and menus. Note the menu bar in the upper left that flies in and out. If you use the menus a lot, you can pin the menu bar open by clicking the blue thumb tack.

1.4 SolidWorks add-ins

SolidWorks has many **add-in** modules that can slow down the startup process and can slow down the application itself. Since we won't be using any of the add-ins, you can turn them off. Here's how to turn off **Simulation**.

Select **Tools** → **Add-ins**. You will get a pop-up window with all the available add-ins. There are two sets of checkboxes: one shows the currently active add-ins. The other enables you to prevent the add-ins from being loaded at startup. Go through the Active Add-ins checkboxes and un-check all the active add-ins.



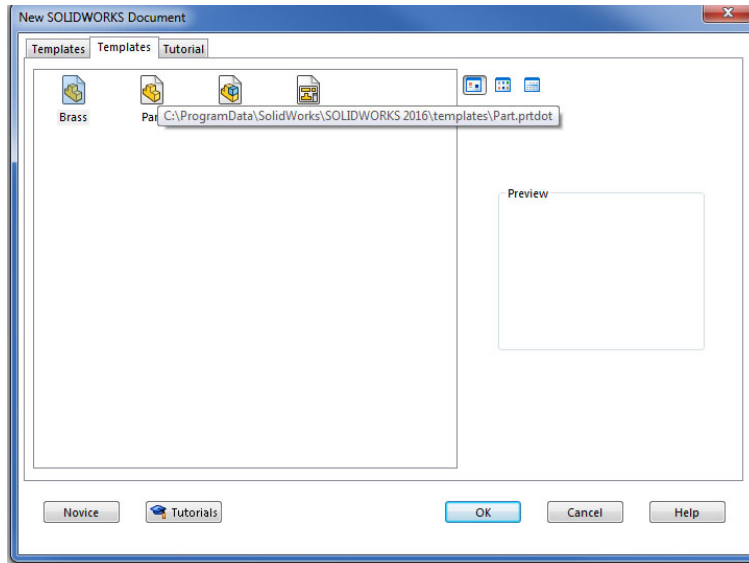
1.5 Document templates

Templates can include settings for such Document Properties as:

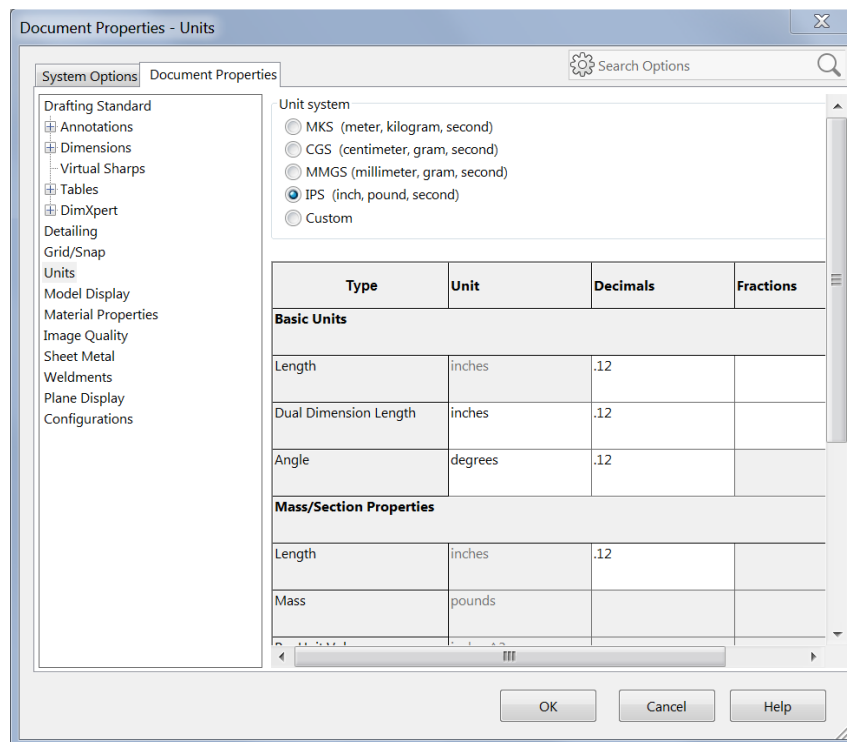
- grid spacing
- extension line and break line gap
- balloon bent leader length
- text scale and text display size
- material density

We will be creating a part in inches in this lab, so let's create a new template that uses IPS (inches, pounds, seconds) units.

Select **File** → **New** → **Templates** → **Part** (double click on part). The screen shot of the popup window is on the next page.



You will get a blank screen. That's OK because now you have all the menus that let you define part properties. Next, select **Tools** → **Options** → **Document Properties** → **Units** → **IPS** (inch, pound, second). Click OK.



Finally, to save the template, select **File** → **Save As** → **Part Templates (*.prtidot)**. I saved mine as IPSpart.prtidot.

