

**Sketch:**



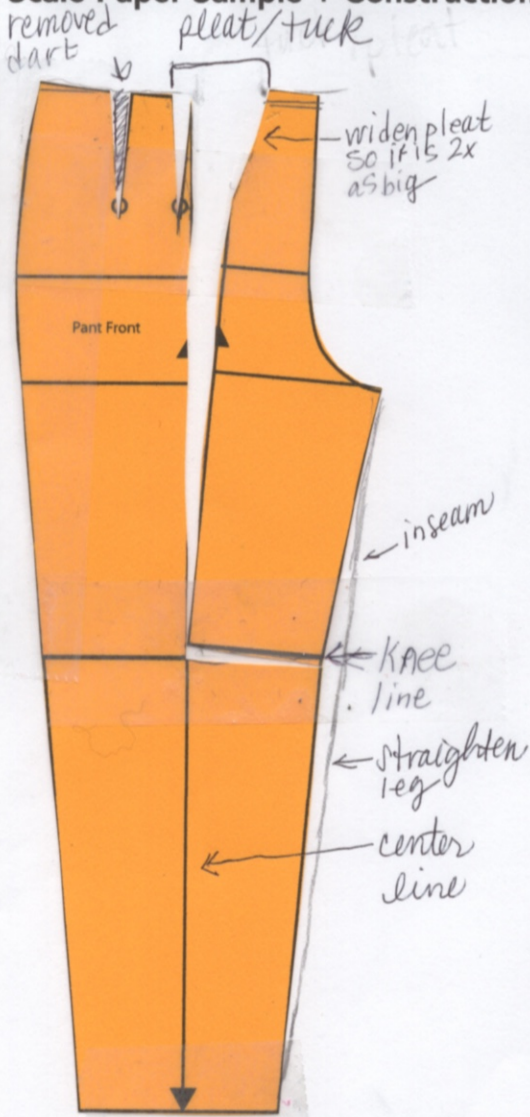
**Garment Name:**

Adding pleat, no change in hem

**Notes:** - ~~create~~ - create double-wide dart ~~at~~ at center line. Remove original pleats (by ignoring that area and not cutting them)

- cut down centerline from new pleat dart pivot to knee line.
- cut from center line to inseam along knee line
- pivot at knee line to widen waist to create pleat/tuck

**Scale Paper Sample + Construction Sketch**



- Straighten inseam line.
- Keep back pant sloper block as original (no changes)

Sketch:

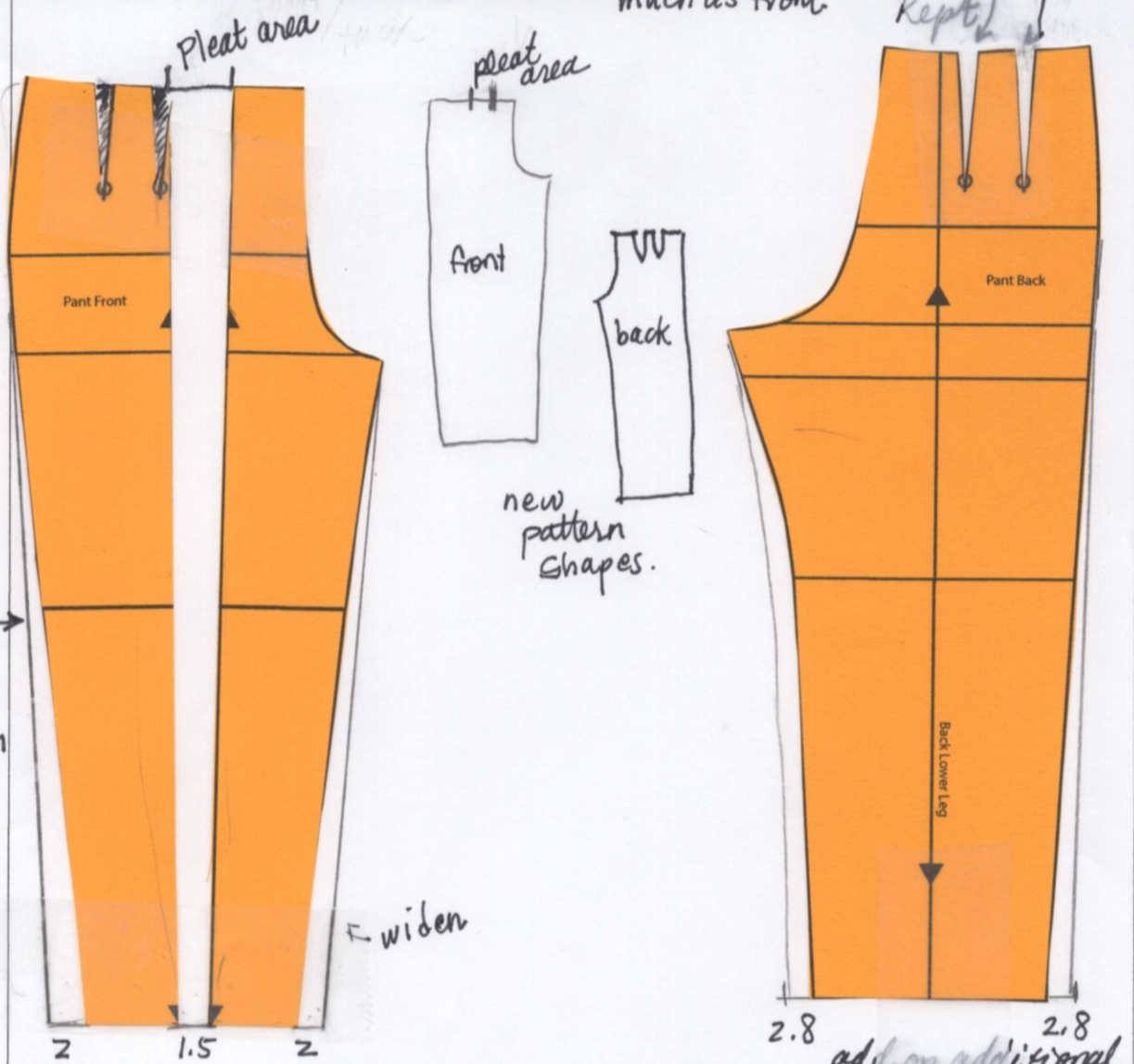


Garment Name: *all the way from*  
*Adding Pleat ~~from~~ waist to hem*

Notes:

- cut at center line of pant front
- spread to create room for additional fabric for pleat
- ignore front darts
- keep pant back darts.
- widen pant legs
- make sure back ~~leg~~ *leg* *is widened as much as front.*

Scale Paper Sample + Construction Sketch



*add on additional width to rear pant pattern so hem addition is same as hem addition in front*

Sketch:



Garment Name:

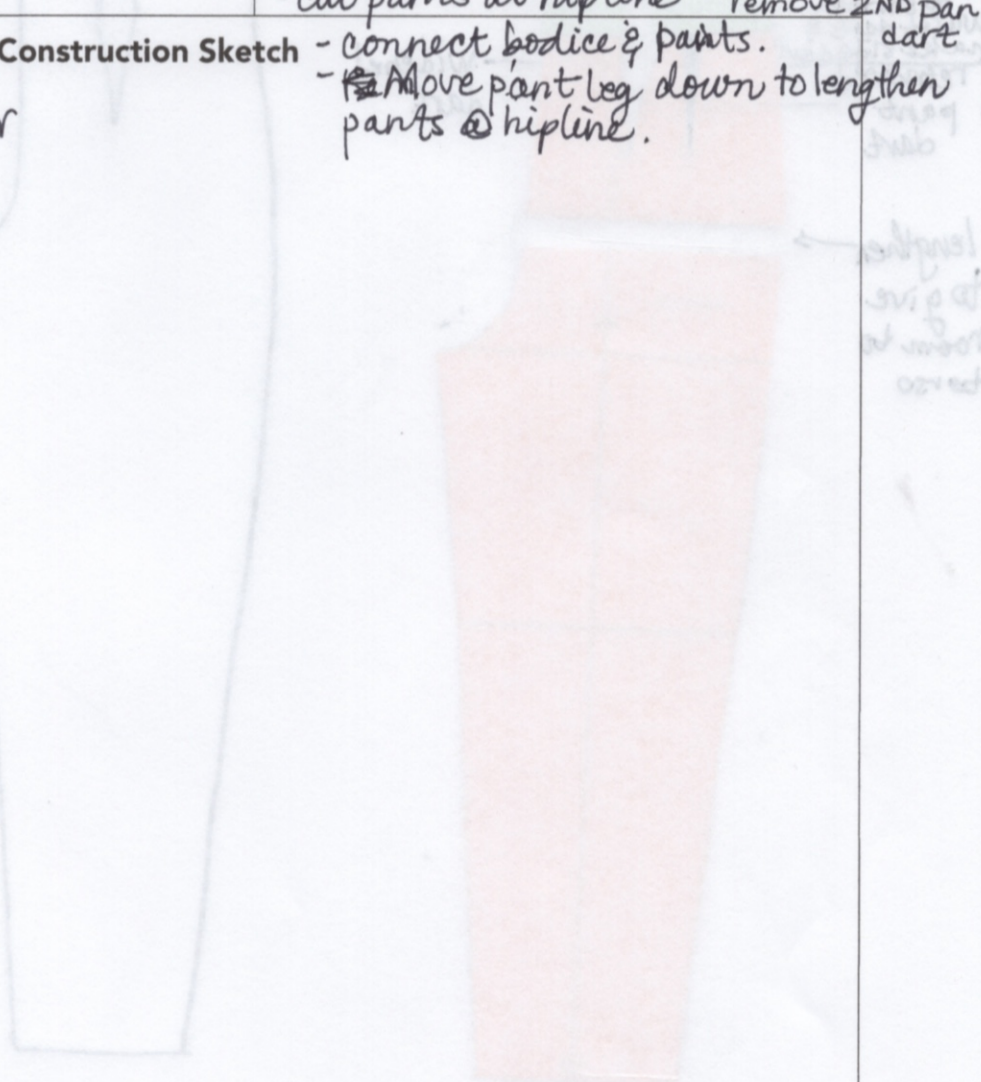
Jumpsuit

Notes:

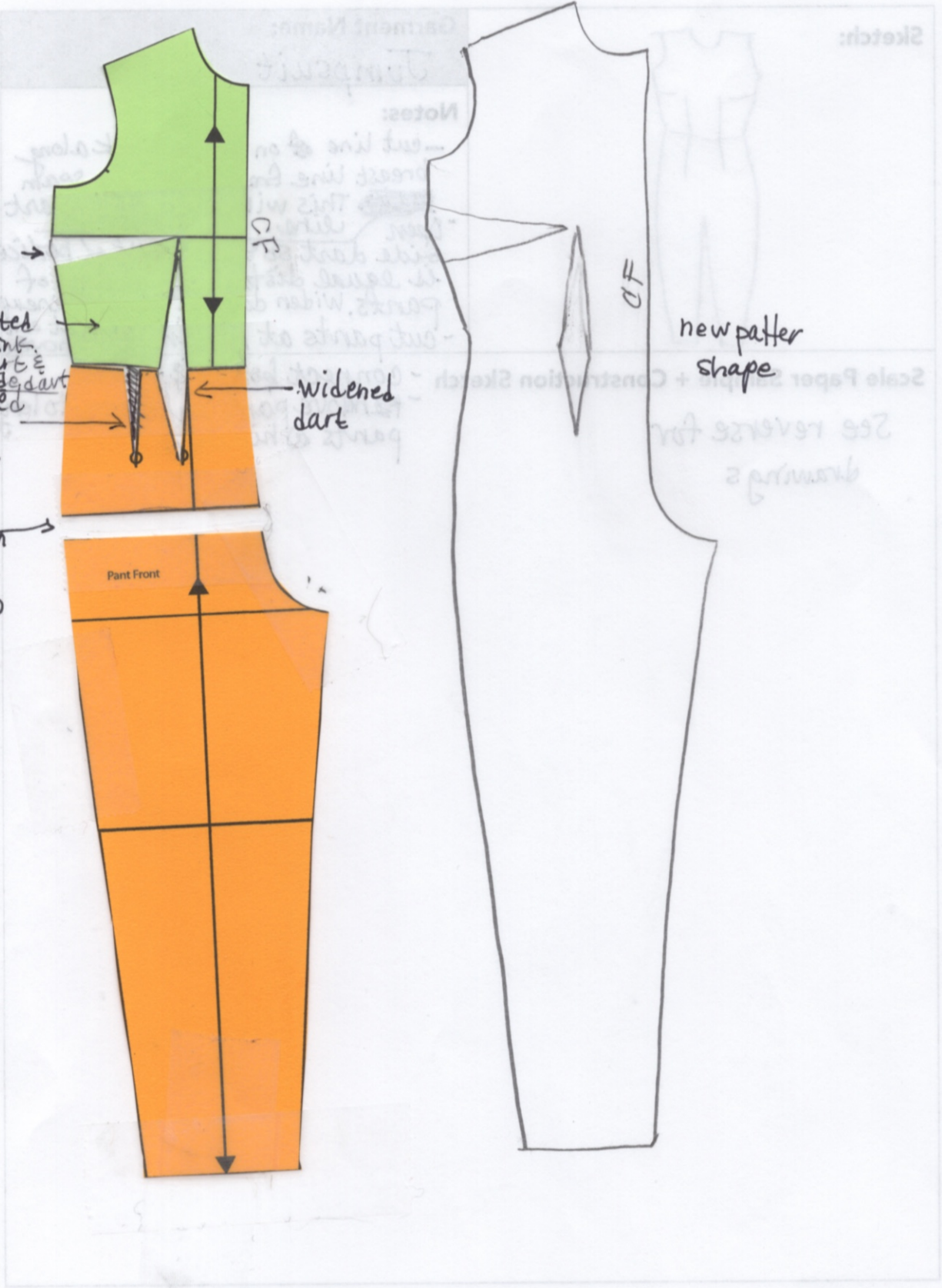
- cut line ~~at~~ on bodice block along breast line from BP to side seam ~~line~~. This will make a new dart line.
- Open side dart so that waist of bodice is equal distance of waist of pants. Widen dart on pants to line up with dart on bodice.
- cut pants at hipline. remove 2ND pants dart
- connect bodice & pants.
- ~~Remove~~ Move pant leg down to lengthen pants @ hipline.

Scale Paper Sample + Construction Sketch

See reverse for drawings



Sketch:



new side dart

CF

pivoted to shrink waist dart & make side dart removed pant dart

widened dart

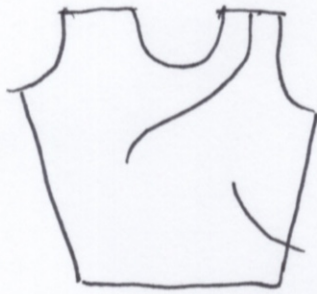
DF

new pattern shape

lengthen to give room to torso

Pant Front

Sketch:



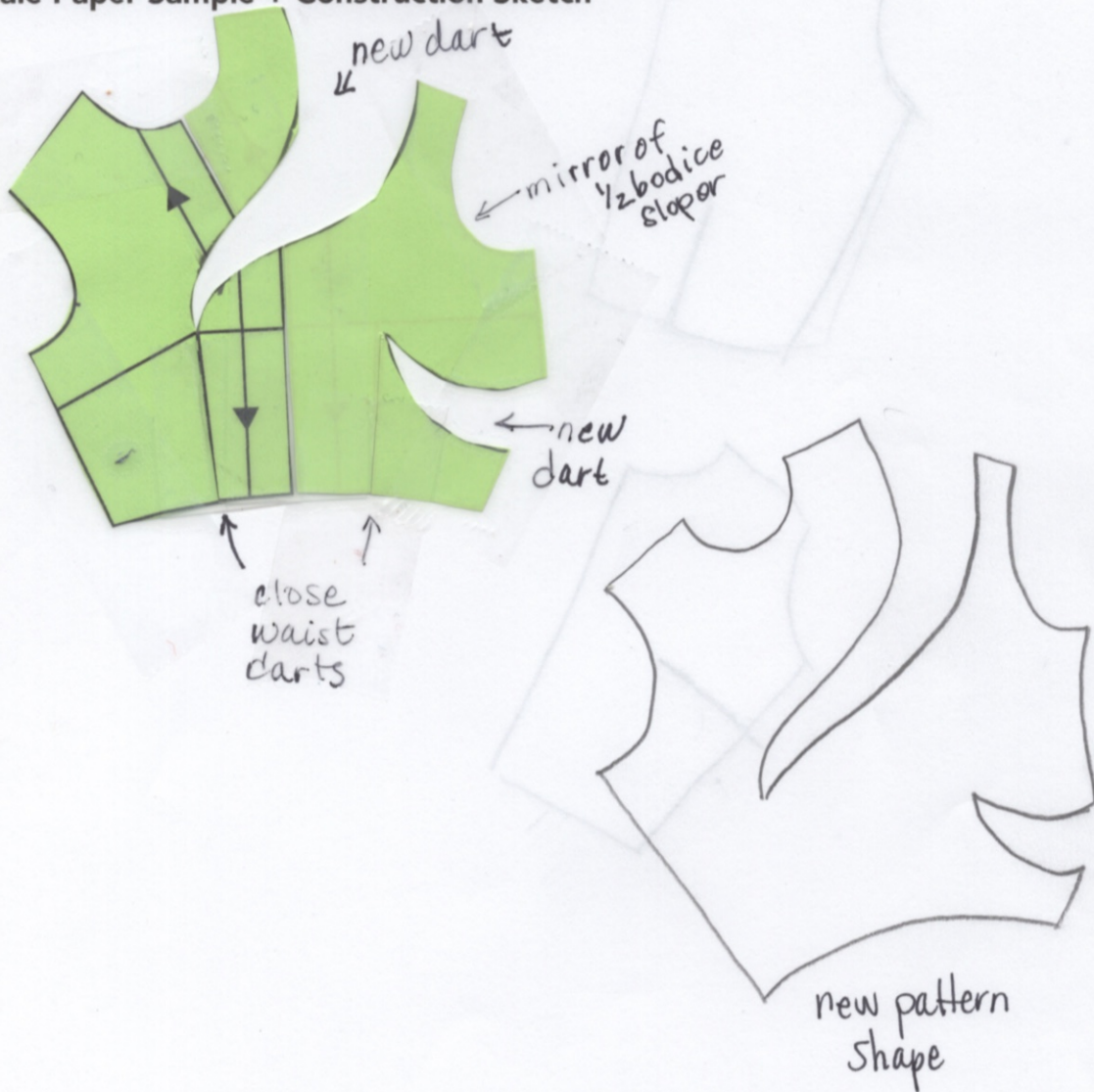
Garment Name:

Asymmetrical Curved Dartline

Notes:

- Mirror  $\frac{1}{2}$  of bodice sloper to create full pattern for front of bodice
- Connect together @ Center Front (CF)
- Draw curved darts so they end at Breast Point/Pivot Point.
- Cut new curved darts to BP
- Rotate portion to close both original waist darts.

Scale Paper Sample + Construction Sketch



Sketch:



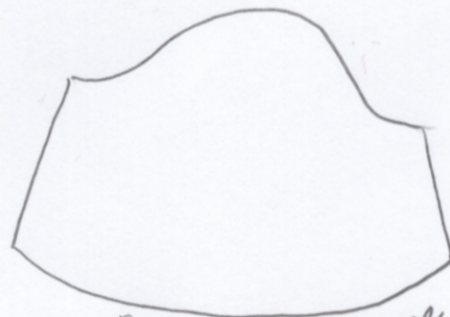
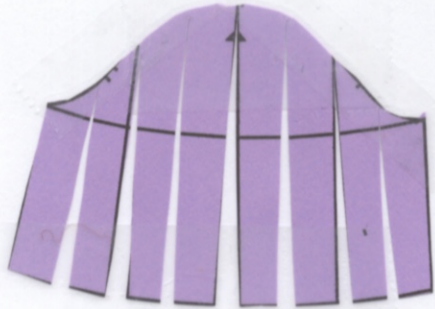
Garment Name:

Flutter Sleeve

Notes:

- slash & spread to widen hem of sleeve.
- cut sleeve at elbow before slash & spread.

Scale Paper Sample + Construction Sketch



new pattern piece

Sketch:



Garment Name:

Bib Front Blouse

Notes: - create new dart from BP to CF by cutting along Breast Line from PF to Center front.

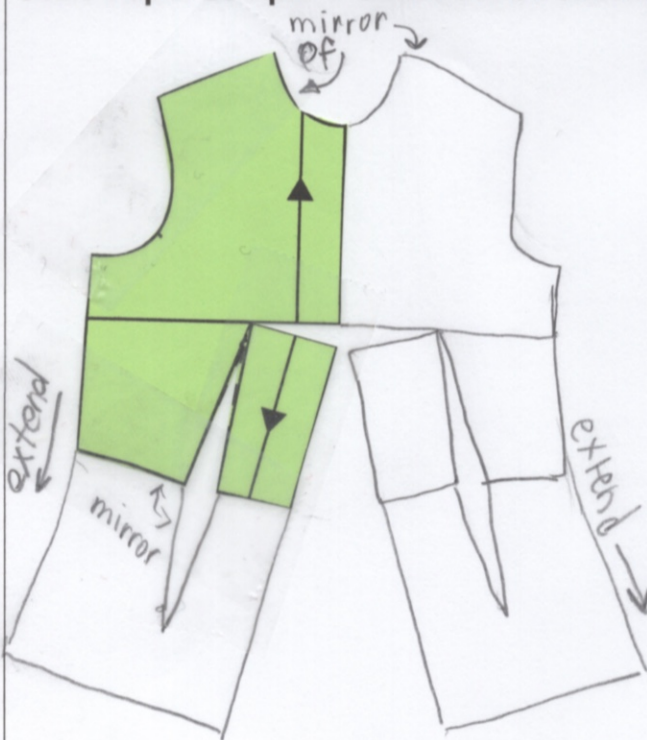
- ~~open~~ pivot at BP so waist and center dart are the same size.

- Extend length of torso

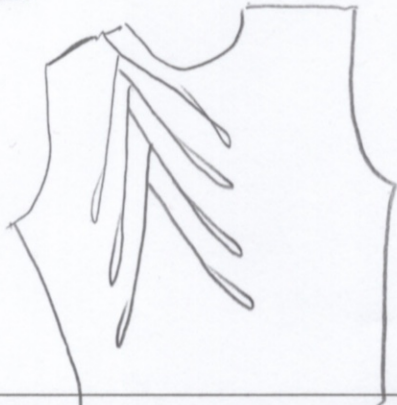
- Mirror waist dart & bod dart becomes

Scale Paper Sample + Construction Sketch

diamond shape.  
- Mirror the bodice 1/2 block to make full front pattern.  
new pattern shape



Sketch:



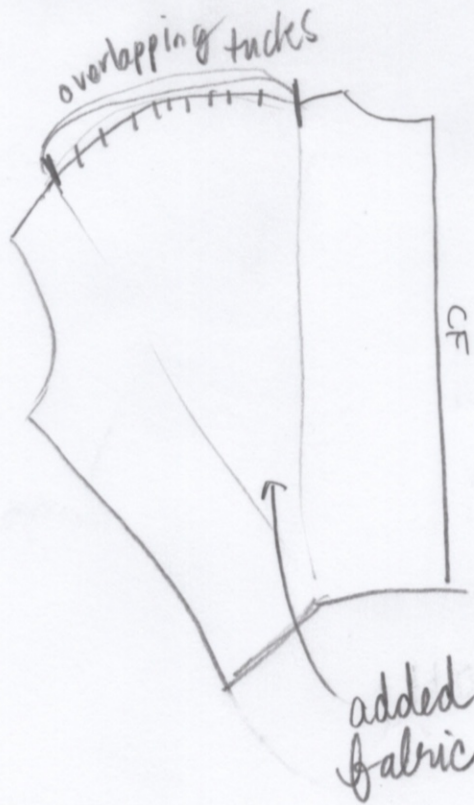
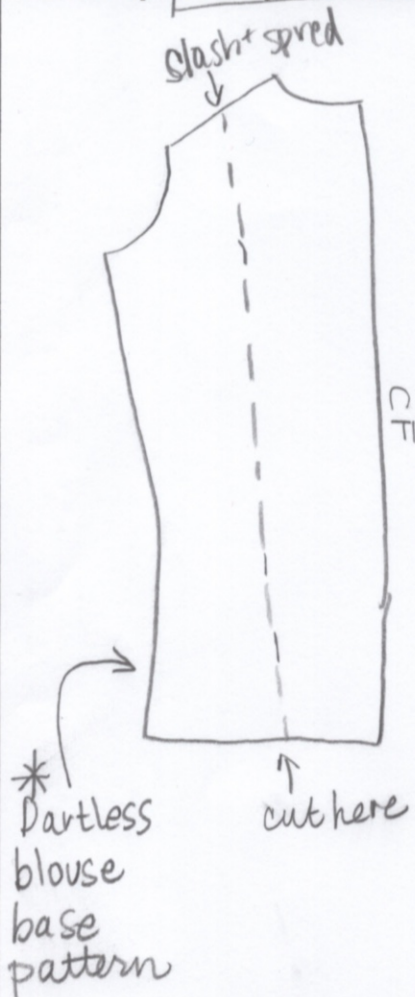
Garment Name:

Overlapping Shoulder

Notes:

- use the pattern for a dartless blouse as the base for this pattern as drawn \*
- draw line from midway on shoulder to midway at hem
- cut & spread at line to add fabric to create overlapped tuck area at shoulder.

Scale Paper Sample + Construction Sketch





Sketch:



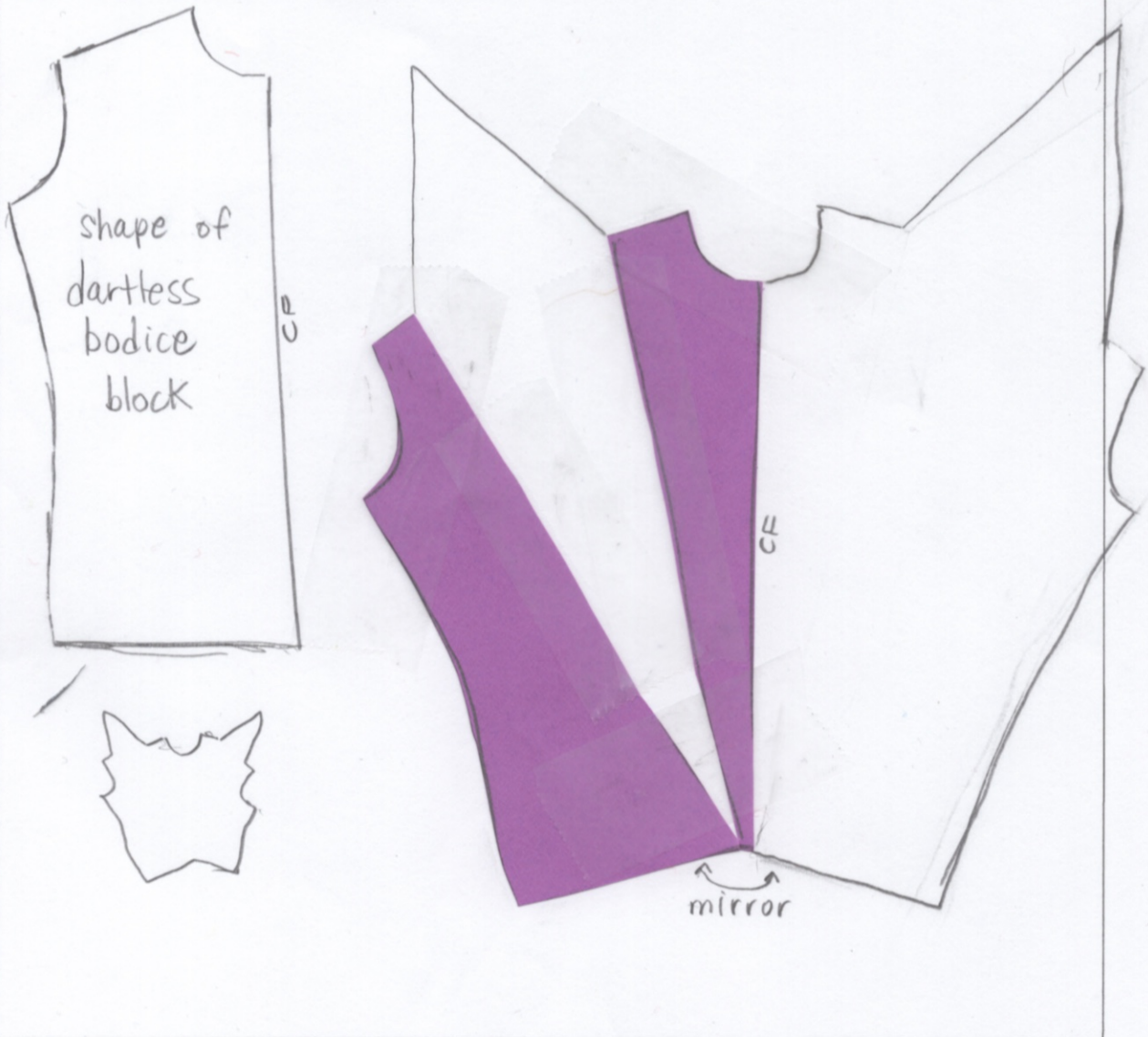
Garment Name:

Grown on Lapel Blouse

Notes:

- use dartless bodice block as base
- draw line from mid-shoulder to center front @ hem
- add fabric to make lapel
- mirror to create full bodice piece pattern.

Scale Paper Sample + Construction Sketch



Sketch:



Garment Name:

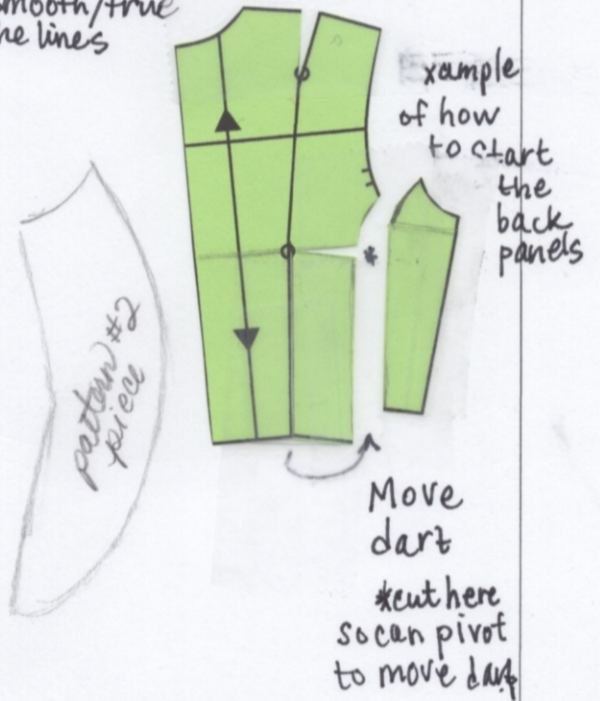
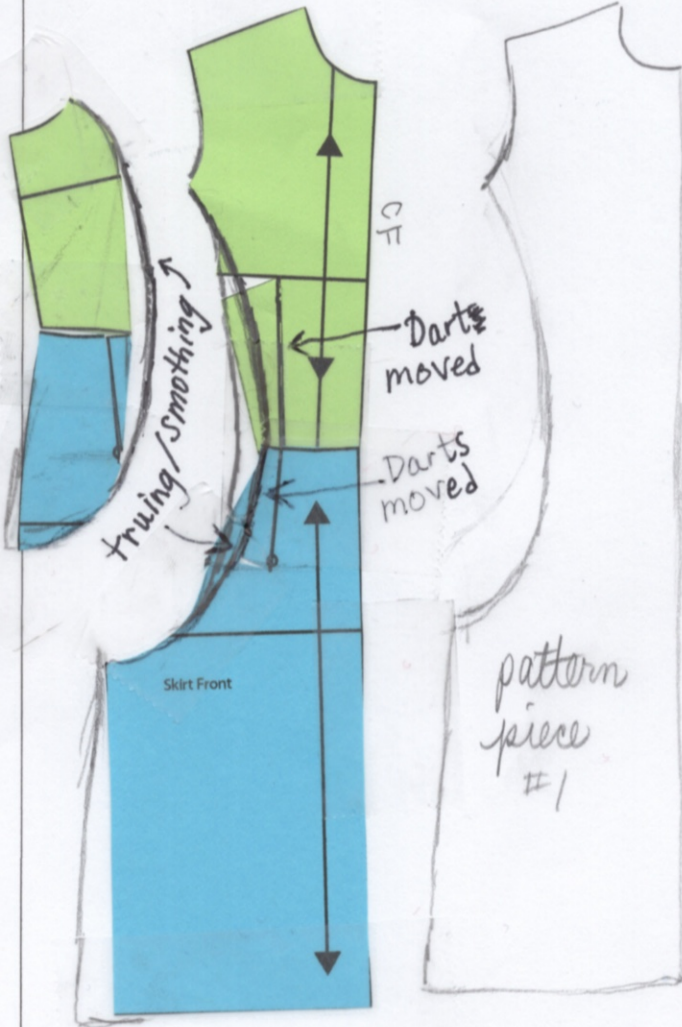
Color Panel Dress with Vienna-line

Notes:

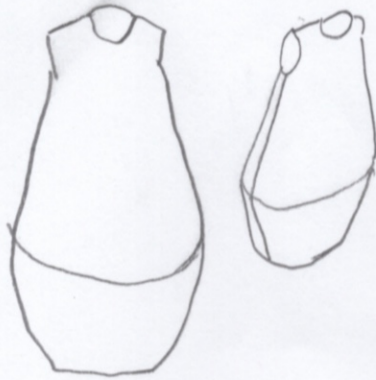
- Draw line to locate new ~~of~~ dart position on bodice piece.
- Cut up new dart line and a cross breast line to BP + pivot.
- Draw curve from top of dart to sleeve cut.
- Move dart on skirt bottom + add curve

Scale Paper Sample + Construction Sketch

- connect pieces
- Smooth/true the lines



Sketch:



Garment Name:

Lantern Dress

- Notes:
- cut dress sloper at hip line
  - remove side dart: draw line downward from breast line at Breast Point down to hem (perpendicular to hem line)
  - cut this line and spread to close side dart and to widen the hem line
  - slash and spread 2<sup>ND</sup> portion so top line is the same length as hem of portion #1. Keep hem line on #2 the same width.
  - Do same (as above) to back pattern pieces.

Paper Sample + Construction Sketch

