

Sketch:



Garment Name:

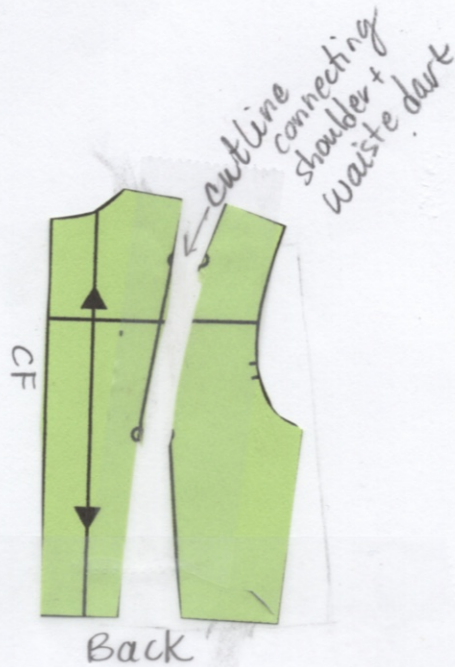
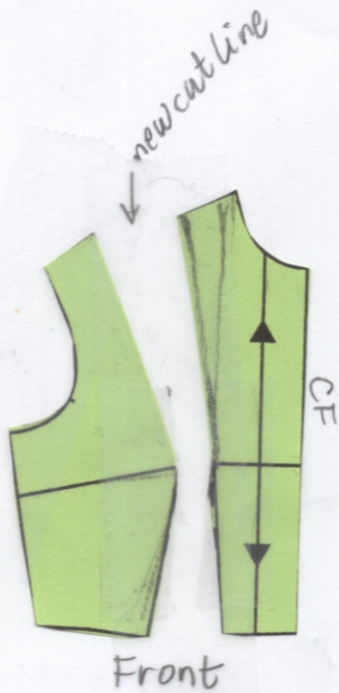
Princess Seams MS

Notes:

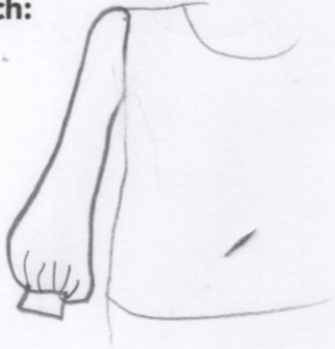
- ① Draw line from pivot point (on front bodice pattern) to midway on shoulder.
- ② Cut along this line creating two pattern pieces.
- ③ Back bodice pattern: cut along line that connects the two darts (shoulder + waist darts)

Scale Paper Sample + Construction Sketch

This creates two back pieces



Sketch:



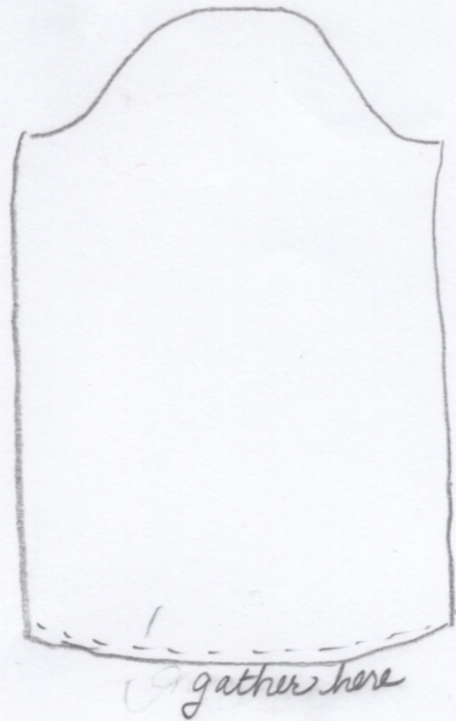
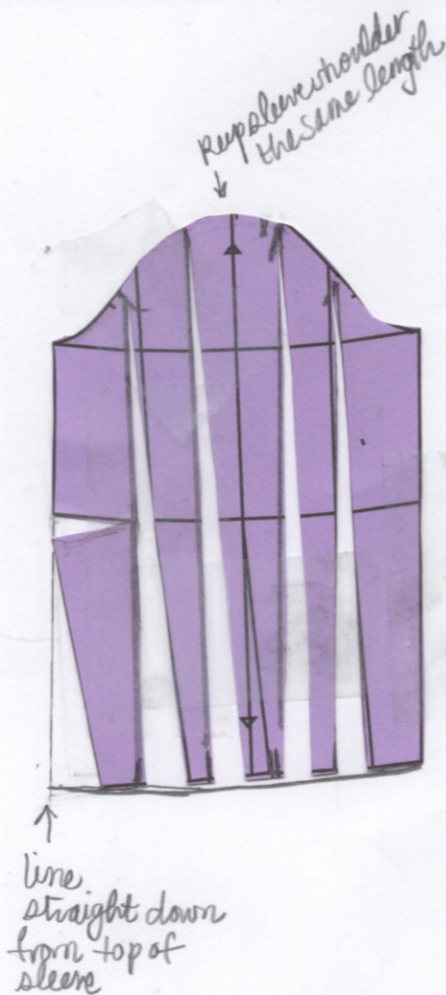
Garment Name:

Bishop Sleeve

Notes:

- ① Draw lines length of sleeve that divide sleeve into 5+ sections.
- ② Cut along lines from wrist to sleeve
- ③ Spread so pattern at wrist widens but shoulder stays the same.
- ④ Gather at wrist and add cuff

Scale Paper Sample + Construction Sketch



Sketch:



Garment Name:

Wide Leg Pants

Notes:

- ① Slash from darts at waist
 - ② Divide leg into six sections.
 - ③ cut sections up to waist
 - ④ spread evenly to desired width
- waist stays same but no longer has darts.

Scale Paper Sample + Construction Sketch



Sketch:



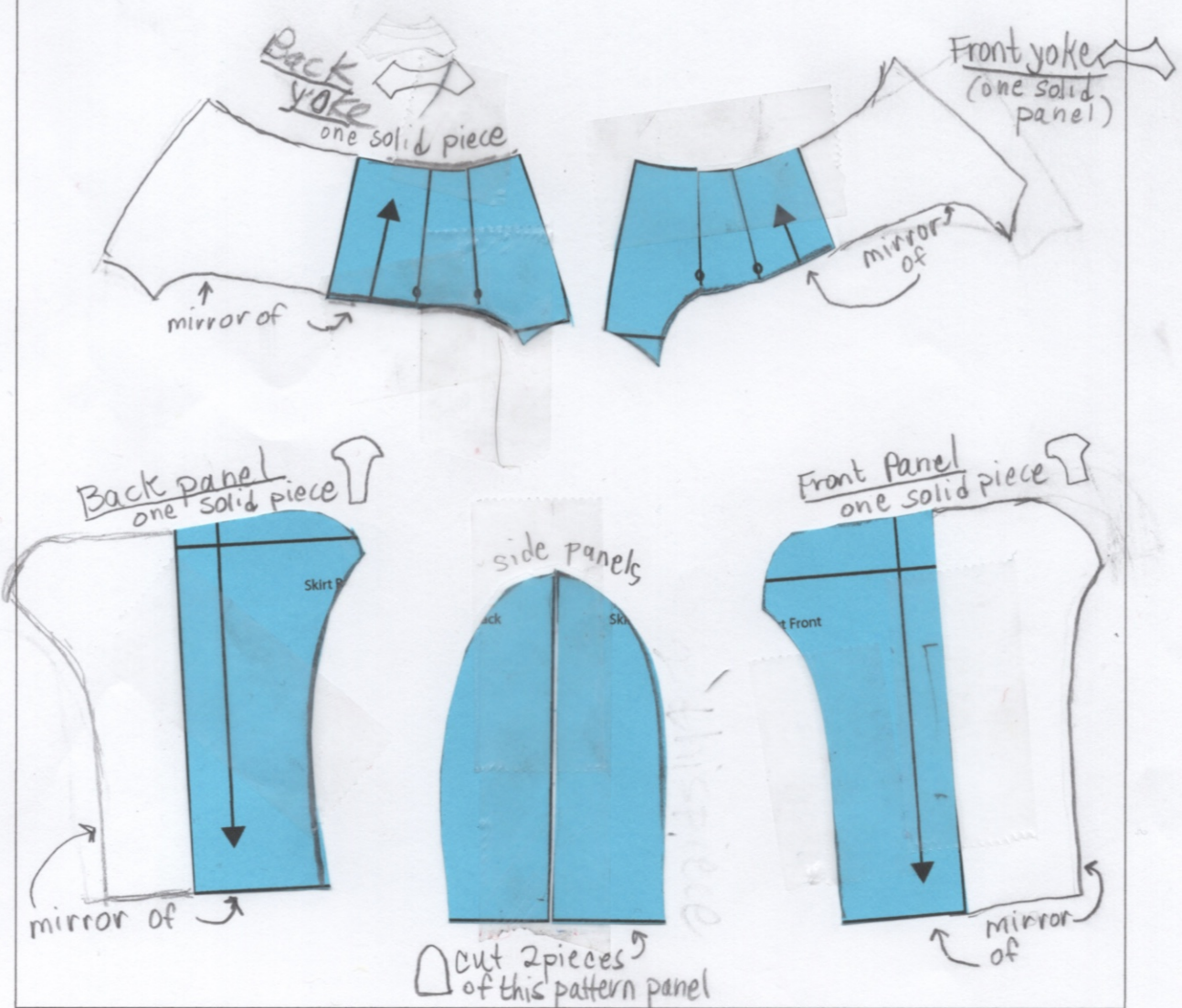
Garment Name:

Complex Style Line

Notes:

- connect front + back pattern pieces at side.
- Draw on style lines
- cut out.
- mirror all panels of pattern, ~~etc~~
- close darts on yokes (darts disappear)

Scale Paper Sample + Construction Sketch



Sketch:



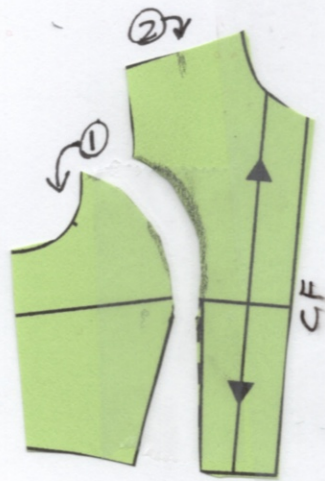
Garment Name:

Curved Princess

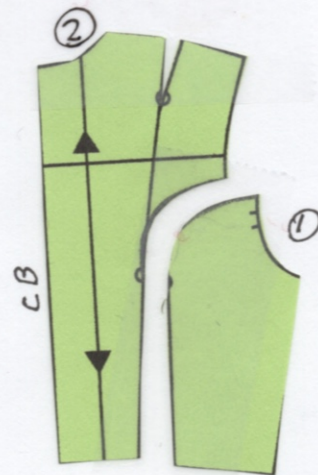
Notes:

- Keep waist dart
- draw curve to armscye (armhole)
- cut so front + back are each 2 pieces.

Scale Paper Sample + Construction Sketch

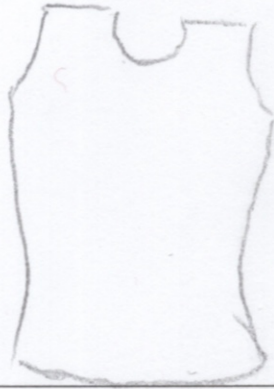


Front



Back

Sketch:



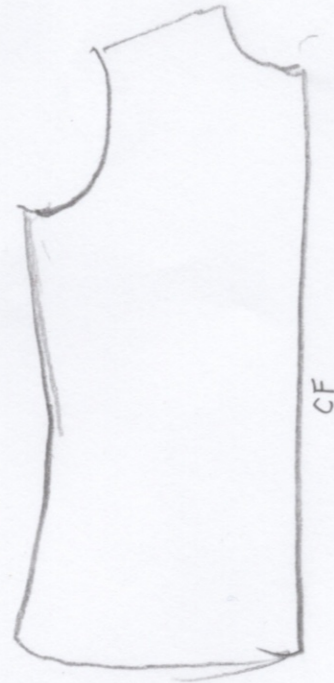
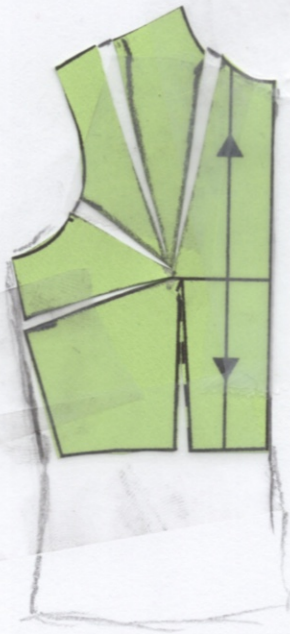
Garment Name:

Dartless

Notes:

- open bodice dart across 5 locations to spread the dart up take around
- extend and straighten sides, though can have come in a bit at the waist.

Scale Paper Sample + Construction Sketch



Sketch:



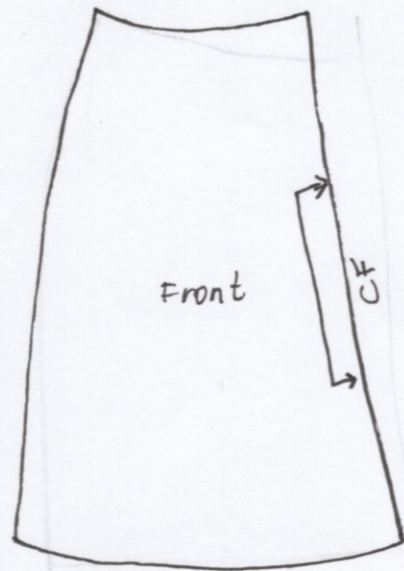
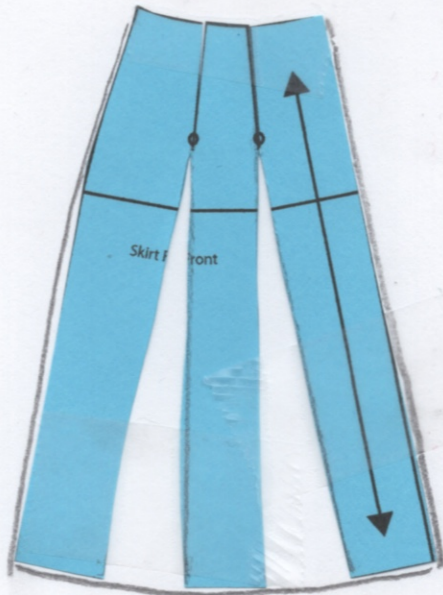
Garment Name:

Fit + Flare / A-Line skirt

Notes:

- for A-line skirt change grainline to be on the bias.
- slash + spread to close upper darts and remove them.
- do same to front & back panels.
- can also decide to close less on back panel and leave a little bit of dart.

Scale Paper Sample + Construction Sketch



Sketch:



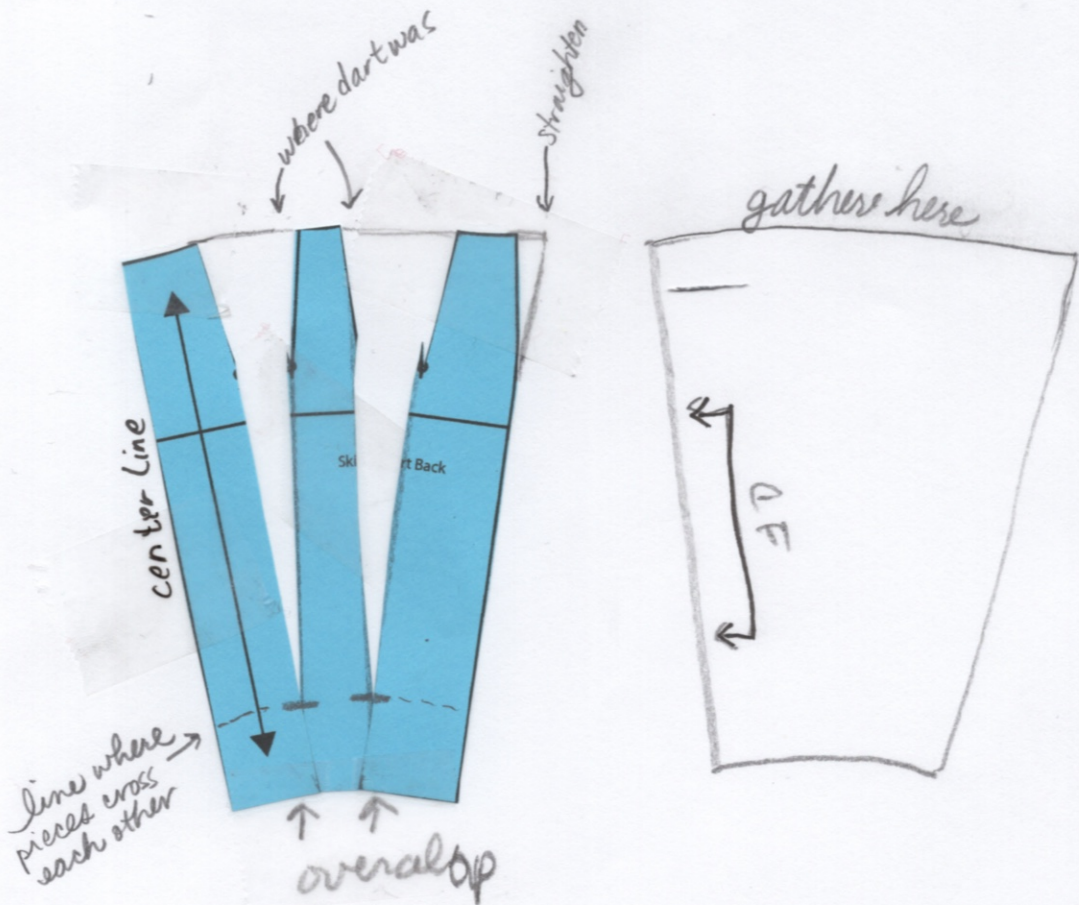
Garment Name:

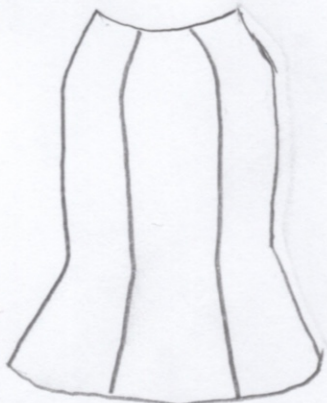
Peg Top Skirt

Notes:

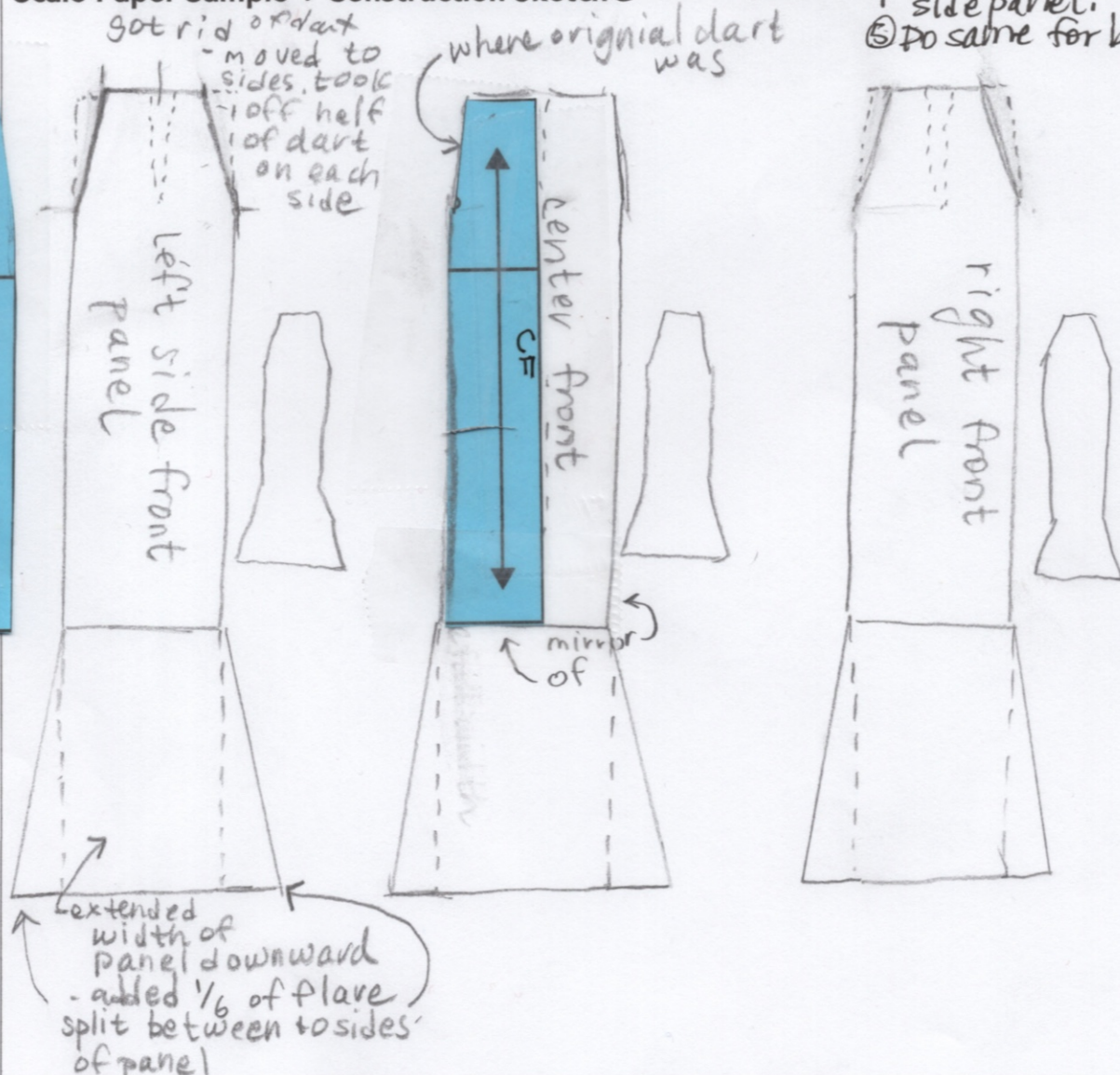
- ① Draw 2 lines from base of darts to hem of skirt dividing it into 8 sections
- ② Cut lines
- ③ Spread at top of skirt (waist) so cut lines "x" and slightly overlap at base/hem.
- ④ Gather at waist to create puffed top

Scale Paper Sample + Construction Sketch - Do the same for front and back pieces.



<p>Sketch:</p> 	<p>Garment Name: Six panel Skirt</p> <p>Notes:</p> <ol style="list-style-type: none"> ① Draw line from dart closest to Center Front. ② Take center panel w/cf, mirror it, extend length, add 1/6 of flare split between the 2 sides of panel. ③ Side section: divide width of dart in 1/2 and cut off of the right and left side of panel (this removes dart). Extend length and add flare as in center panel. ④ Mirror left side panel to create right side panel. ⑤ Do same for back.
---	--

Scale Paper Sample + Construction Sketch



got rid of dart - moved to sides, took 1/2 off half of dart on each side

where original dart was

Skirt Back

left side front panel

center front CF

right front panel

mirror of

extended width of panel downward - added 1/6 of flare split between to sides of panel

Sketch:



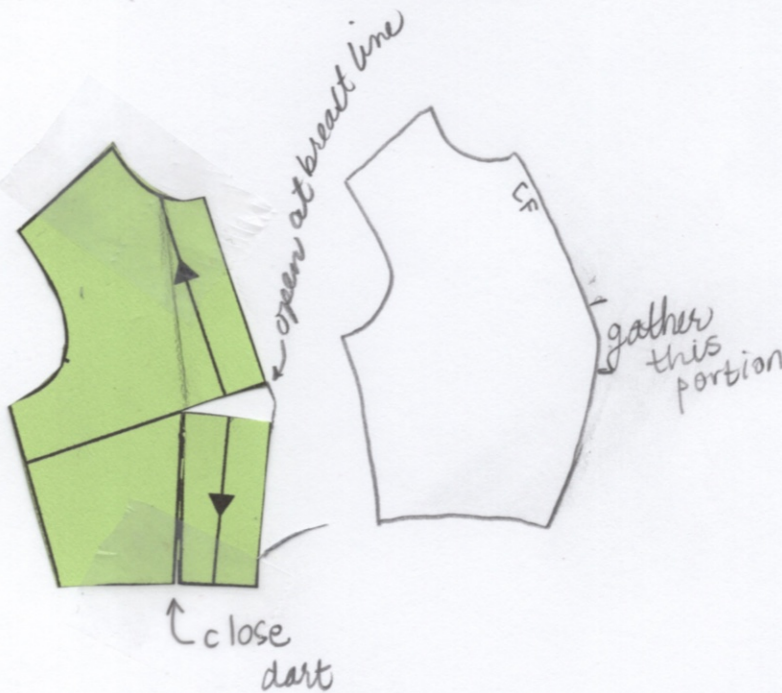
Garment Name:

Center Front Gather

Notes:

- ① cut along breast line from pivot point to center front (CF)
- ② close waist dart to open new cut line at center front breast line
- ③ Gather new, extra cloth

Scale Paper Sample + Construction Sketch



Sketch:



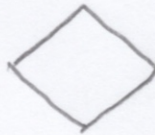
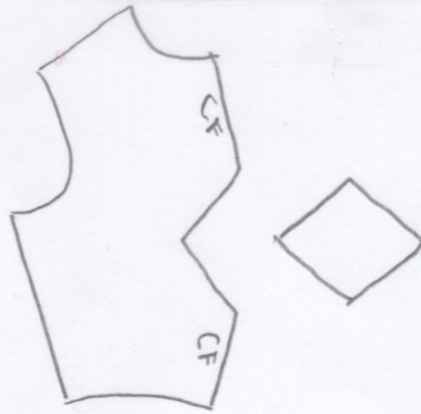
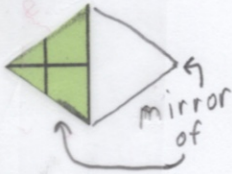
Garment Name:

Diamond Inset Center Front

Notes:

- ① Draw $\frac{1}{2}$ of diamond, begin at Breast Point (BP)/Pivot Point.
- ② Cut out $\frac{1}{2}$ diamond.
- ③ Close waist dart.
- ④ Mirror horizontally the diamond to complete shape.

Scale Paper Sample + Construction Sketch



Sketch:



Garment Name:

Center Front Part

Notes:

- ① Cut breast line ~~to~~ Pivot point to CF.
- ② Close waist dart
- ③ Mirror at center front to create pattern

Scale Paper Sample + Construction Sketch

